



Lantal's genuine leather portfolio
Presentation for Lantal customers

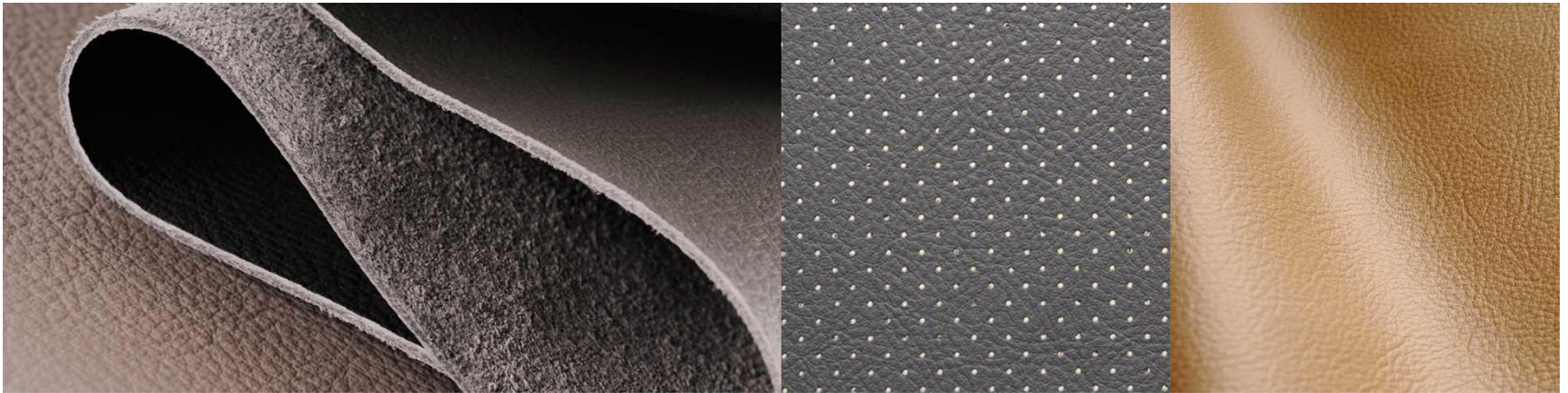


Table of contents

- 01 Introduction
- 02 Leather history
- 03 Construction
- 04 Skin classification
- 05 Lantal's leather portfolio
- 06 Key advantages
- 07 Leather offer
- 08 Parts & Services
- 09 Maintenance and cleaning



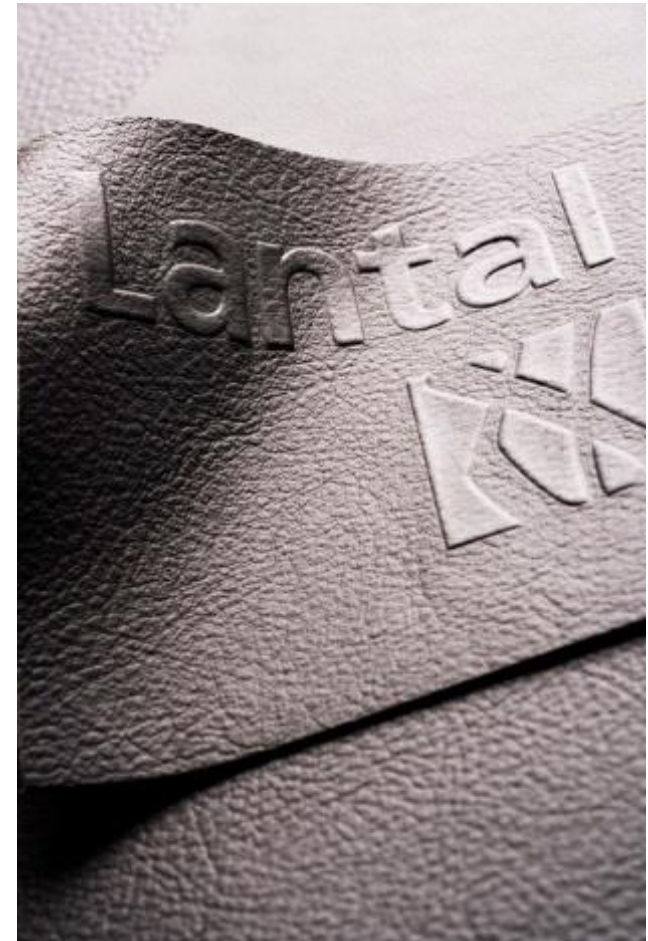
Lantal's genuine leather

01 - Introduction

Natural leather combines many convincing benefits.

Apart from its functionality, it stands out with elegant looks that add a touch of luxury to the interior.

Lantal genuine leather covers the entire spectrum of customer expectations with respect to durability requirements, color preferences, and value-adding design options for compliance with corporate identity guidelines.



Alongside wood and stone, leather is one of the oldest materials in human history. Before discovering how to primitively prepare leathers, humans only used the fur of animals.

The embossing technique is as old as the leather itself. The first recorded tanning processes were preserving with smoke, mastication of skins as once practiced by eskimos, and preserving by using lubricants or substances of tree barks combined with water.

The foundation for the industrial mass production of leather articles was laid in the 19th Century with the introduction of chromium salt. Craft workshops evolved to become large industrial companies.

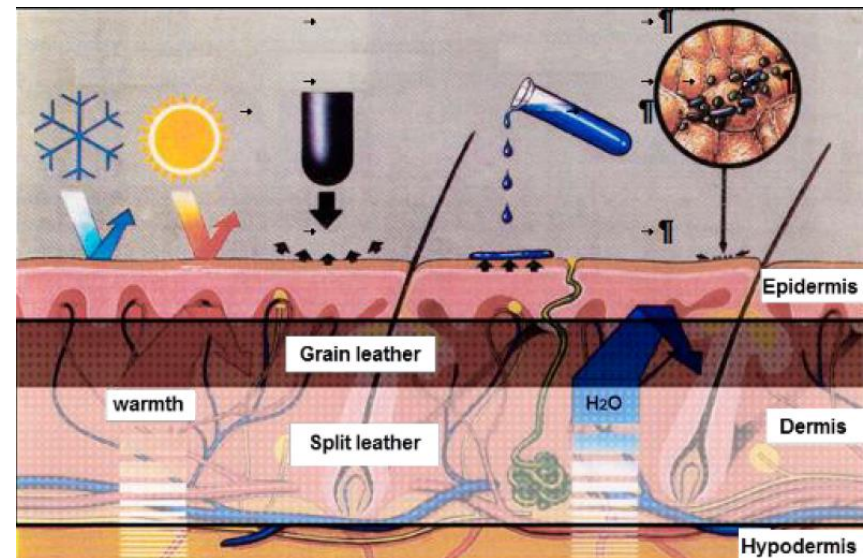
Tanning with mineral chromium salts is still the basis of modern leather production.



Like human skin, animal hides are built up in layers :

- the epidermis: the uppermost skin layer acts as the natural protective barrier of the skin.
- the dermis which serves as a strain layer of the skin with the specific characteristics of leather elasticity and tensile strength.
- the hypodermis: the connection layer between the skin and the body

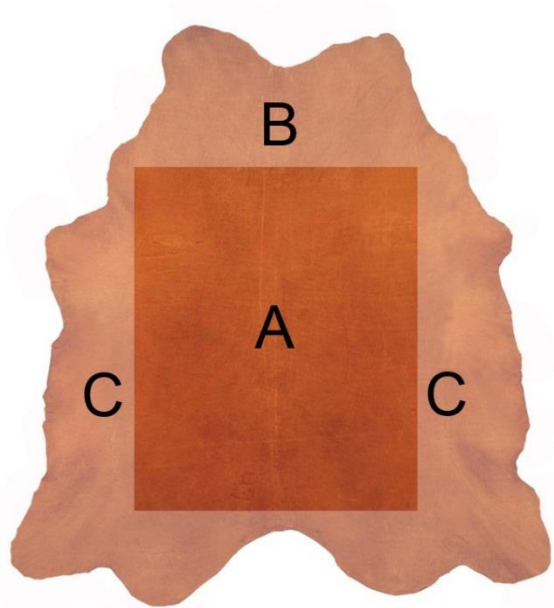
For leather production: only the dermis is used (epidermis and hypodermis are removed before tanning).



Lantal's genuine leather

04 - Skin classification

The entire hide is used for leather production. Grown on the animal's body, it is differently aged and consists of zones of different structures and grains.



A - Spine, centerpiece : As the spine has to support a large part of the body weight, the fiber structure is very dense and strong. Therefore the spine piece is used for the most demanding parts of upholstery (seat cover).

B - Neck : The neck of the animal is subject to much up and down movement. This elongation and contraction is possible because of the skin wrinkles in this area. Thus the fiber structure of the neck part is less dense than the spine zone and specially marked by creases.

C - Belly/flank : As the skin of the belly has no load-bearing function it shows a loose fiber structure; it is not very strong and exhibits a coarse structure. Thus the tensile strength of this part of the hide is not very high.

Lantal's genuine leather

04a - Natural characteristics and skin defects

The skin is a piece of nature, protective cover and sensory organ – living, breathing, feeling coldness and heat, it is characterized by inimitable attributes.

The skin is marked with pores, scars and structural differences. These natural characteristics are responsible for the high quality of leather products.



Lantal's genuine leather

o4b - Illustrations of natural characteristics and skin defects

Every single hide has its very own history. Leather always exhibits traces of each animal's past life.

The surface of the leather is often characterized by features such as fat wrinkles or tick bites. These marks show the authenticity of the leather.

Because they do not influence its quality or service life, these natural marks are not considered as defects in the conventional sense of the term and cannot be judged as non-conformance with quality standards.

When cutting the hide, every effort is made to avoid prominent or unsightly markings on parts ultimately used for the exposed surfaces of a seat. This is part of the leather know-know !



Dung stains



Goad marks



Horn punctures



Putrefaction



Sores



Scars



Thorn scratches



Curry-comb injuries



Tick bites



Fat wrinkles



Branding marks

Lantal's genuine leather

05 - Lantal's leather portfolio

Lantal's genuine leather portfolio consists of 3 different qualities with differentiated textures:



Classic
Art. 9361



Crescendo
Art. 9549



Conbrio
Art. 9543

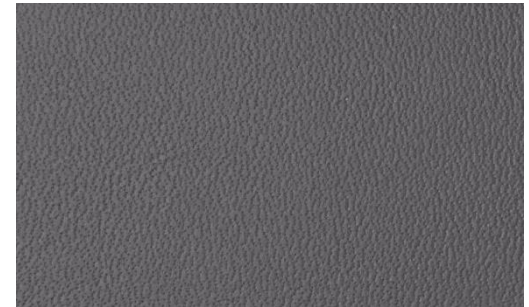
Lantal's genuine leather

05a – Quality “Classic - Art. 9361” for a sensual elegance

Description

Thanks to its fine, smooth surface, Classic has a very stylish and elegant look and feel. With its suppleness and soft glow, it emphasizes the magic of sleekness. Classic is 1.1 mm thick.

This long-life natural product owes its round hand to the pleasant fullness of the fiber structure.



Technical Data

Weight (± 10 % tolerance)	800 g/m ²
Thickness (± 0.1 mm tolerance)	1.1 mm
Average hide size (approx.)	5 m ²
Raw material	European bulls
Specifications	FAR 25.853; ABD0031

Lantal's genuine leather

o5b – Quality “Crescendo - Art. 9549” for a natural beauty

Description

The surface of Crescendo reveals the authentic structure of the hide, accenting the beauty of natural leather.

With a thickness of 1.1 mm, it has a soft hand and exhibits excellent functionality. A special process with a balanced varnish finish makes Crescendo a hardwearing, easy-to-maintain upholstery material that preserves the natural traits of genuine leather.



Technical Data

Weight (± 10 % tolerance)	800 g/m ²
Thickness (± 0.1 mm tolerance)	1.1 mm
Average hide size (approx.)	5 m ²
Raw material	European bulls
Specifications	FAR 25.853; ABD0031

Lantal's genuine leather

o5c – Quality “Conbrio - Art. 9543” for a long-lasting expressiveness



Description

The balanced depth and intensive structure of Conbrio emphasizes the expressiveness of leather.

The refined surface manifests longevity and character. Conbrio guarantees a precision cut and is wear-resistant.

It is 1.1 mm thick and despite processing preserves a soft hand. Conbrio is the best choice for large-volume projects.



Technical Data

Weight (± 10 % tolerance)	800 g/m ²
Thickness (± 0.1 mm tolerance)	1.1 mm
Average hide size (approx.)	4.8 m ²
Raw material	European bulls
Specification	FAR 25.853; ABD0031

Lantal's genuine leather

06 - Key advantages

- Leather confers an image of luxury, exclusivity and elegance. The exquisite beauty and true naturalness of genuine leather is an impressive and important design element in aircraft cabin interiors.
- A natural material, permeable to air and moisture, functional, subtle, flexible and durable.
- Design options such as embossed or debossed logos as well as Lantal's broad selection of colors make leather highly adaptable to your livery and corporate identity.
- Uniqueness of a noble material. As an evidence of its genuineness, uniquely grown and individual in the pattern of its pores, scars, surface structure and natural creasing, every leather is a unique piece in its own right.



-
- Maintenance-friendly: easy to clean and care for, leather retains its original beauty for a very long time.
 - Hygienic material: dust and dirt remain on the surface and can be wiped off easily.
 - Longer service life. The natural beauty of the leather is preserved even after years of use (approx. 6 years as an indication). This really depends on several factors: geographical routes, routing and cleaning attitudes)
 - Specifications: Flame-resistant, lightfast, oil-resistant and water-repellent. It complies with today's most stringent standards.

Lantal's genuine leather

07 - Leather offer: MOQ and colors



Colors 48 pre-defined colors as well as customer individual colors

MoQ	Classic	25 m ² per color
	Crescendo	50 m ² per color
	Conbrio	250 m ² per color

**Lead time
production** Approx. 6 - 8 weeks


**Leadtime
samples** Approx. 4 - 6 weeks

Lantal's genuine leather


07a - Leather offer: cosmetics options

Embossing / Debossing / Embroidery
with logos or any other custom design
elements.



Embossed 



Debossed 



Leather is highly adaptable to
customer's livery and corporate identity.

Lantal's genuine leather

o7b - Leather offer: cosmetics options

Perforation: 2 options are possible

- Full perforation extended through the entire thickness of the leather
- Semi-perforation (dimples)

Advantages

- Design style: to enhance the look of the seat
- Comfort: added benefit of a moisture balancing function.



Lantal's genuine leather

o8 - Parts & Services: ready-to-install covers

The availability of all competencies from a single source allows us to deliver ready-to-install leather seat covers and implement your project quickly, efficiently, and to high quality standards.

- Lantal manages the entire process from development, engineering, and certification to on-time delivery. You benefit from a single point of contact, streamlined administration, lower costs, and less complexity from start to finish.
- Easy to install, delivered ready-to-install.
- Compliance with all relevant safety regulations for aviation.



Lantal's genuine leather

o8a - Parts & Services: leather cover lamination for highest comfort seating

About lamination

Lantal can also back the leather with a graphite foam or a comfort foam.

Advantages

- the lamination balances moisture
- Lamination improves comfort significantly and enhances looks
- This makes it possible to use leathers in long-haul applications as well.



Lantal's genuine leather

o8b - Making up (processing)

For ready-made seat covers, the whole hide can be used :

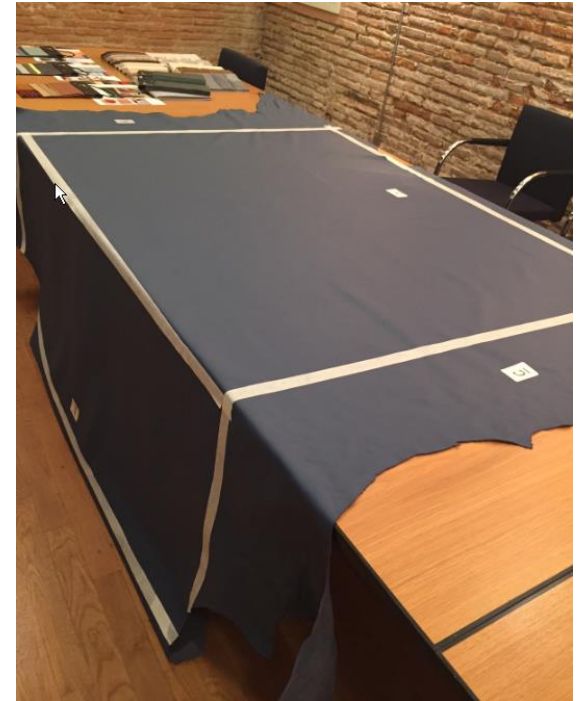
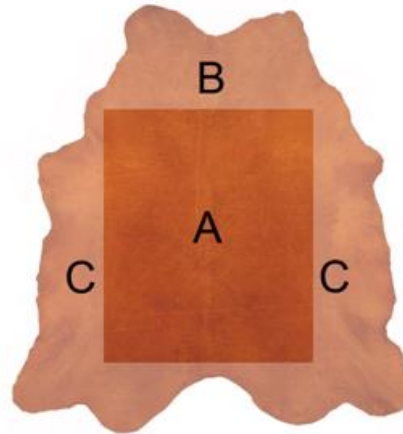
Zone A suitable for all readily visible seat parts

Zones B + C suitable for less visible parts

Zone A approx. 50% - Center piece, densest skin structure

Zone B approx. 25% - Neck, visible neck marks

Zone C approx. 25% - Belly/flank, coarse structure

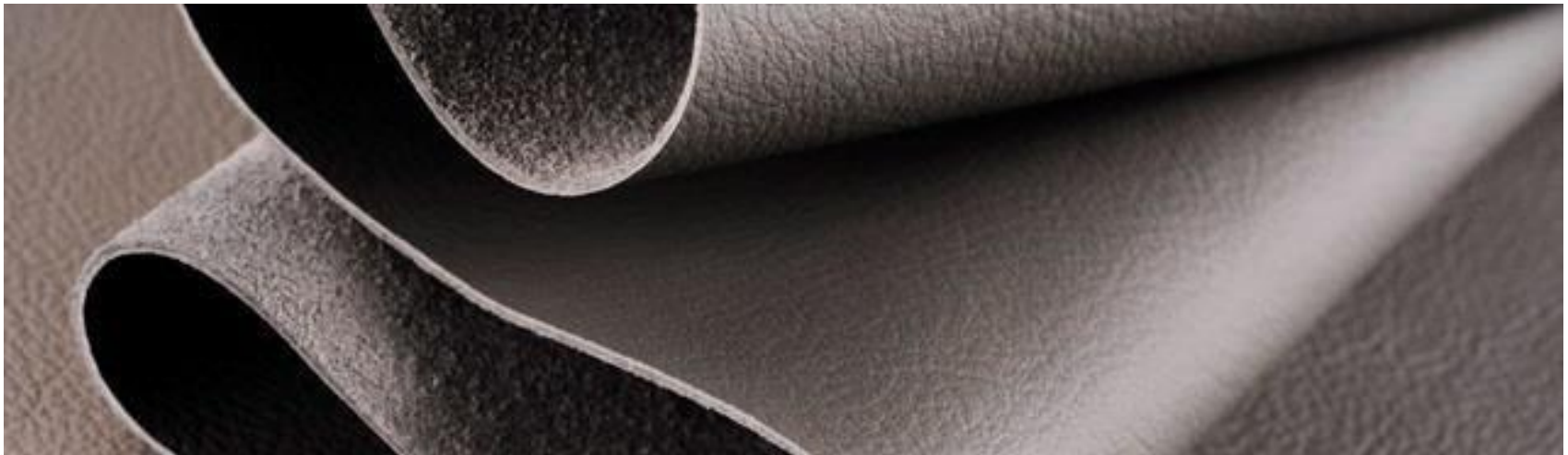


Lantal's genuine leather

09 - Maintenance & cleaning

Provided that the correct cleaning procedures are respected, the seat covers will remain in good condition for an extended period of time. It is highly recommendable to set up a cleaning/maintenance plan and institutionalize the respective procedures.

A cleaning manual is offered to our customers to prolong the attractive appearance of the seat covers.



Lantal's genuine leather

09 - Maintenance & cleaning

Lantal genuine leather is treated with a light tinted coat of varnish to enhance the functionality of the leather, making it lightfast, water- and oil-repellent and permeable to steam. Do not use any detergents!

- **Interim cleaning**

For interim cleaning, we recommend the use of a mild soap solution applied with a sponge or a soft cloth. Then wipe off the soap water with fresh water and dry with a soft cloth.

- **Main cleaning**

This is a deep cleaning intervention using cleaning fluids for leather. Wet a sponge with the cleaner and clean the leather with circular movements. Don't rub! Dry up gently with a clean cloth and let dry for at least 30 minutes.



Lantal – The ultimate in well-being for passengers

