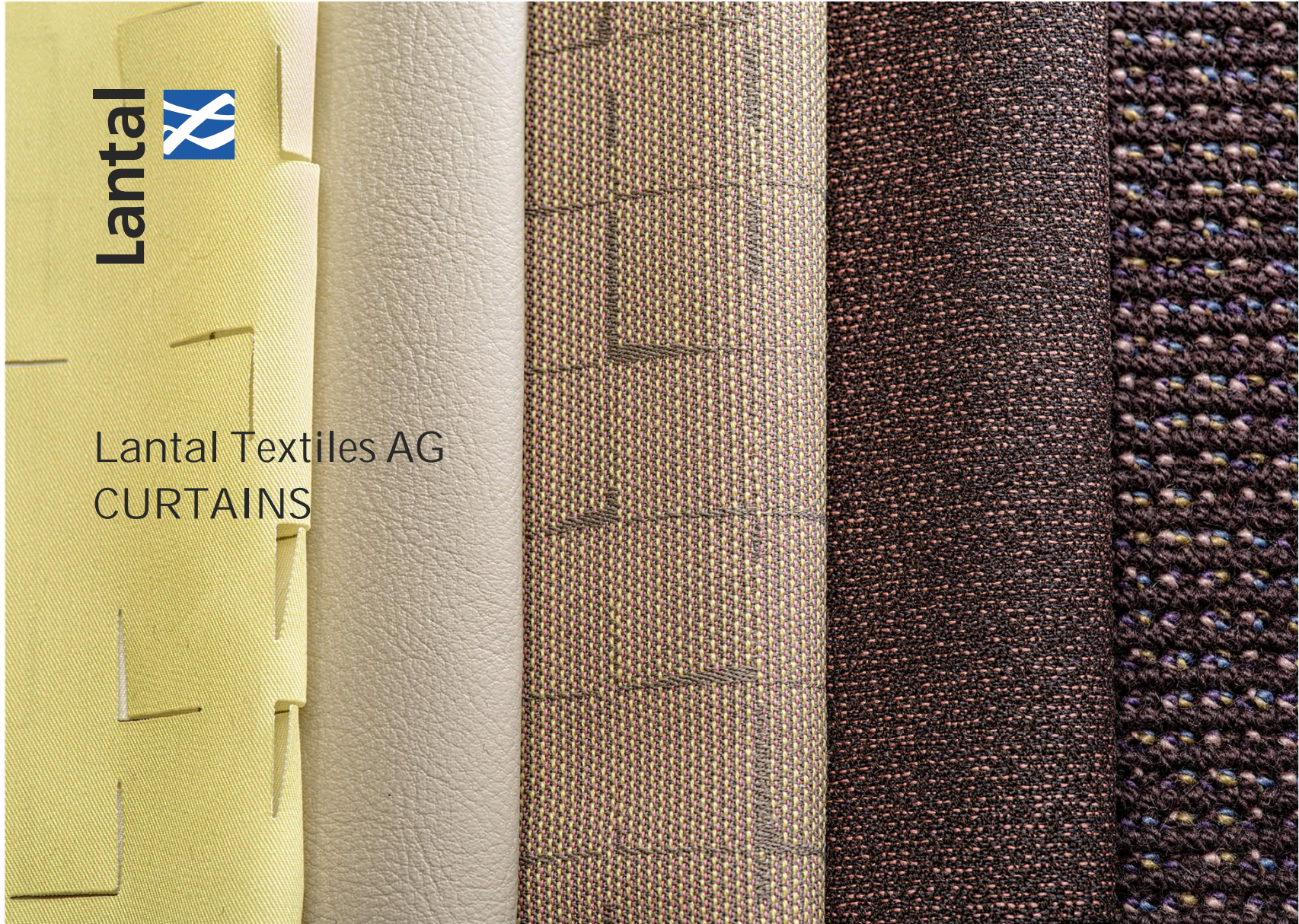




Lantal Textiles AG
CURTAINS



Lantal has more than 60 years of experience
in the aircraft industry



-
- With **more than 400 aircraft industry customers**, Lantal is a global leader when it comes to aircraft soft interior projects
 - Lantal's **international team of designers and project managers** support you from the initial idea to the custom-designed and ready-to-install product
 - With the certification as **Design Organization (EASA Part 21 J)** of Lantal's subsidiary ASI and Lantal's certification as **Production Organization (EASA Part 21 G)** and **own in-house laboratory**, Lantal can quickly and precisely handle your cabin interior project.

Table of contents

-
- 01 Introduction
 - 02 Curtain portfolio overview
 - 03 General information
 - 04 Polyester standard curtain
 - 05 Polyester extra curtain
 - 06 Polyester blackout curtain
 - 07 Polyester blackout printed curtain
 - 08 Polyamide meshed curtain
 - 09 Laser-cut curtain
 - 10 Semi-transparent curtain
 - 11 Sound-absorbing curtain
 - 12 Wool curtain
 - 13 Advantages of steam-pleated curtains
-

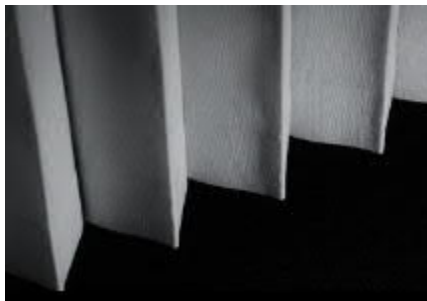


01 Introduction

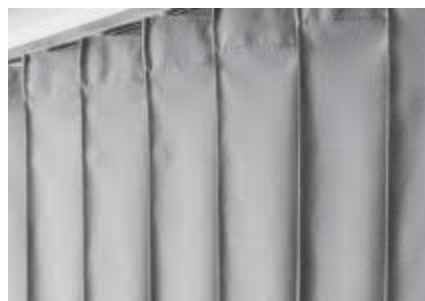
Lantal has served the aircraft market with curtains for over 20 years



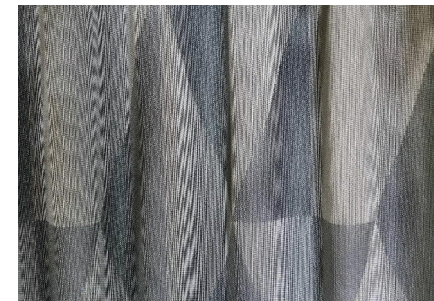
- Lantal's curtains are available as:



Steam-pleated



Sewn-pleated



Wave/Natural plain

- Lantal's curtains are available in **different materials, colors, designs and sizes**

01 Introduction

Lantal's curtains have different functionalities



Design accents



Light-absorbing



Sound-absorbing



Transparency

02 Curtain portfolio overview

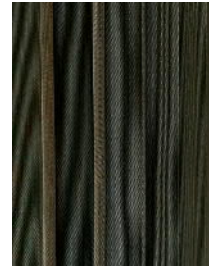
Lantal offers different curtains with different design and functionality options



*Polyester standard
curtain*



*Polyester extra
curtain*



*Polyester blackout
curtain*



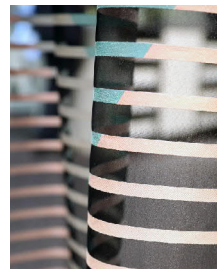
*Polyester blackout printed
curtain*



*Sound-absorbing
curtain*



*Laser-cut
curtain*



*Semi-transparent
curtain*



*Polyamide meshed
curtain*



*Wool
curtain*

03 General information

Lantal's steam-pleated curtains are available with different pleat sizes



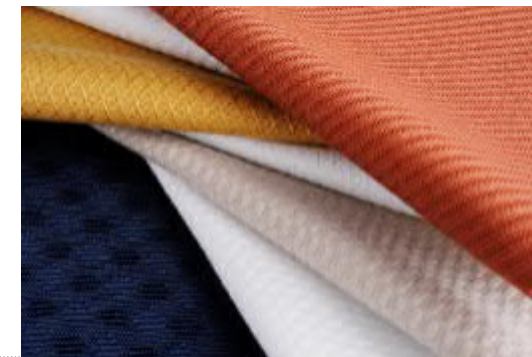
Pleat size

- From 3.5 cm (1.38 inches) up to 10 cm (3.93 inches), all pleat sizes are available
- Max. number of pleats: 36
- Lantal recommends a pleat size of 7 cm (2.76 inches)



Pitch

- Depending on the pleat size, different pitches are available
- Lantal recommends a pitch of 9 cm (3.54 inches)



Layers

- Single, double or triple layer curtains are available

03 General information

Lantal offers different hooks & sliders as well as tie-backs



- With the curtain, Lantal delivers an extensive range of different hooks and sliders
- Three types of snap fasteners are available:
 - Fixed
 - Movable
 - Adjustable
- The matching hooks & sliders, snap fasteners and tie-backs are delivered together with the curtain

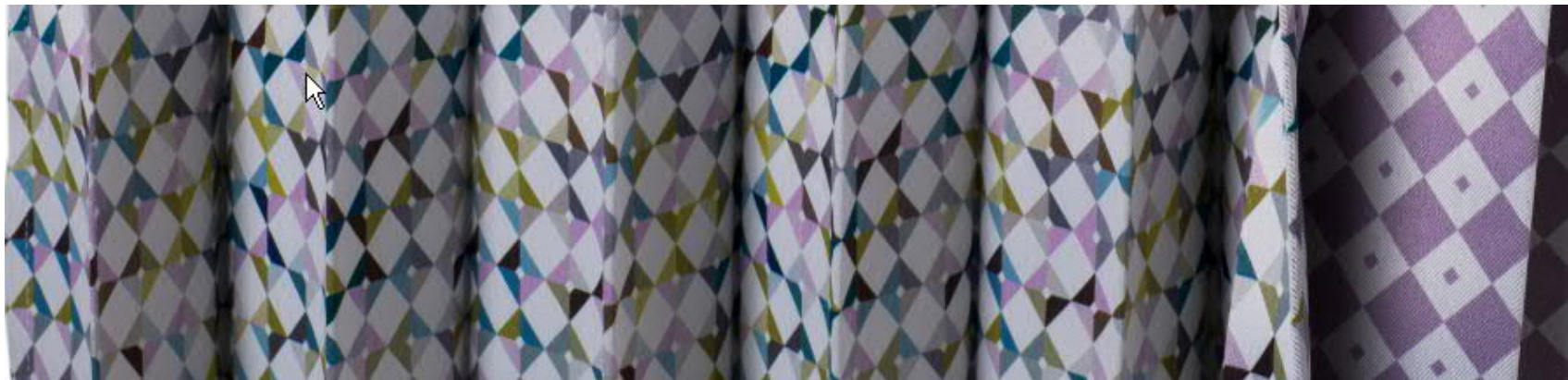


03 General information

Lantal curtains fulfill all relevant airworthiness requirements



- Lantal curtains are compliant with all relevant airworthiness requirements
- Lantal's curtains can be delivered with:
 - Certificate of Conformity (CoC)
 - EASA Form 1
 - Minor Change Approval (MCA)



04 Polyester standard curtain

The most popular quality in the market stands for a long lifetime



- Piece-dyed fabric with 8 predefined designs and one plain weave, also available with custom designs and / or colors
- Fast availability from Lantal's Essentials Stock collection (on request: Article 5039 in 8 colors)
- Matt / gloss effect produces a slightly three-dimensional look
- Easy to wash, multiple times at 40°C / 104°F, or dry cleanable
- Lantal recommends the steam-pleated option for permanent pleats and a better look and feel



04 Polyester standard curtain

Technical information



Material

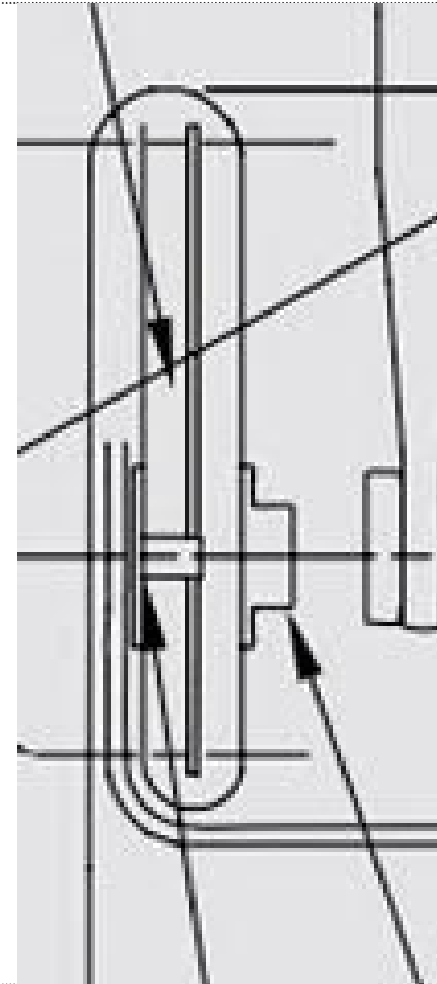
- Flame-resistant polyester (piece-dyed fabric)
- Weave style: Jaquard / Dobby

Weight and width

- From 265 g/m², 8 oz/sy to 355 g/m², 10 oz/sy
- Width 133-139 cm / 52-55 inches

Specifications

- Flame-resistant in accordance with FAR/CS 25.853
- Meets Airbus and Boeing specifications ABD0031/BMS 8-240 (smoke & toxicity)



04 Polyester standard curtain

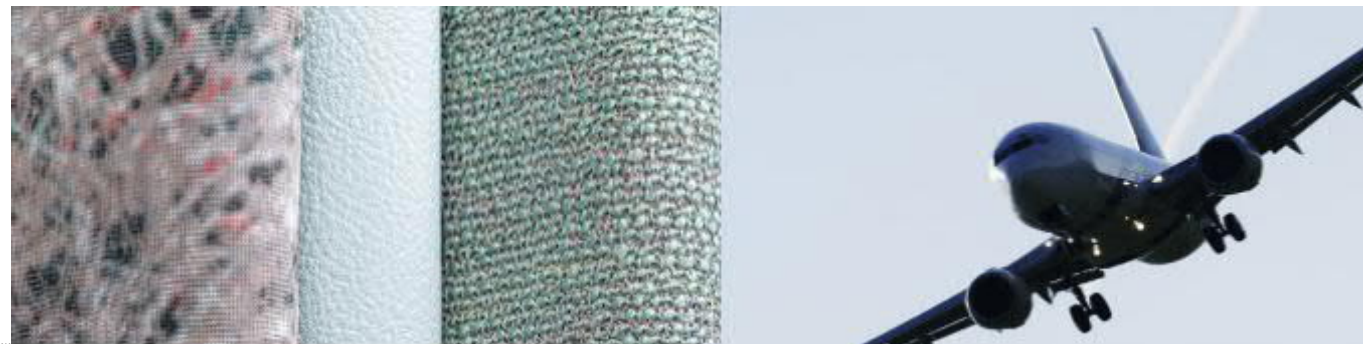
Minimum order quantity (MOQ) and lead time

MOQ

- Off the shelf (Article 5039): 5 linear meters (lm)
- Customized color: raw material 1 roll, approx. 50 lm of fabric, $\pm 10\%$
- Customized design and color: 240 lm of fabric $\pm 10\%$

Lead time of ready-made curtain

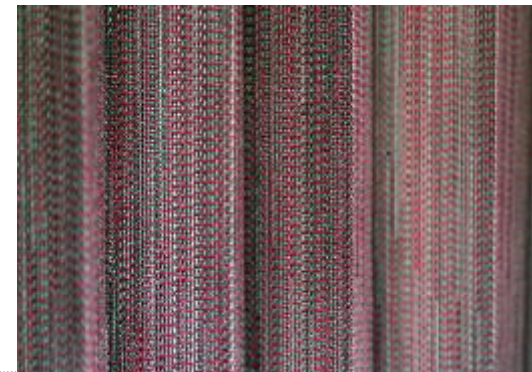
- Stock: 4-6 weeks
- Customized (design and / or color): 10-12 weeks



05 Polyester extra curtain

Choose your own fabric design for curtains

- Customized designs and colors for added contrast and depth, intensive luminance
- Easy to wash, multiple times at 40°C / 104°F, or dry cleanable
- Lantal recommends the steam-pleated option for permanent pleats and a better look and feel



05 Polyester extra curtain

Technical information



Material

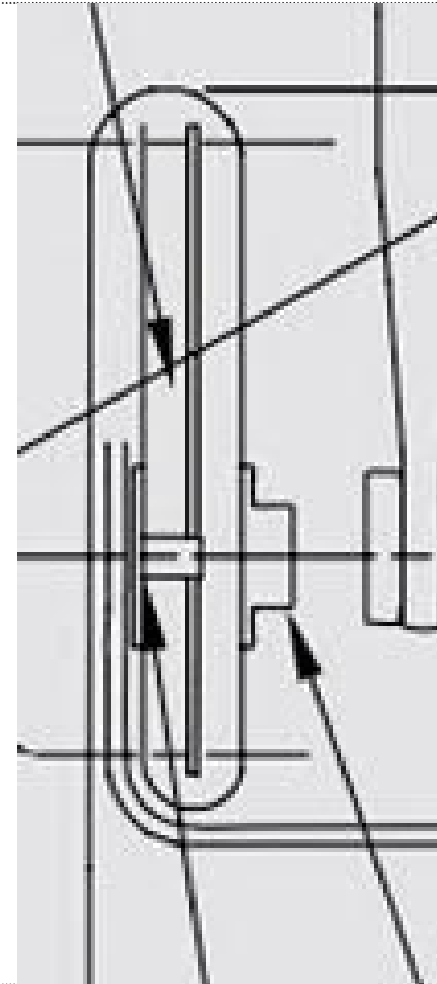
- Flame-resistant polyester
- Always customized design and colors (no stock)
- Weave style: Jacquard / Dobby

Weight and width

- From 270 to 350 g/m², 7.9 – 10.3 oz/sy, tolerance $\pm 5\%$.
- Width is approx. 137 cm, 54 inches

Specifications

- Flame-resistant in accordance with FAR/CS 25.853
- Meets Airbus and Boeing specifications ABD0031/BMS 8-240 (smoke & toxicity)



05 Polyester extra curtain

Minimum order quantity (MOQ) and lead time

MOQ

- 240 lm of raw material (approx. 40-50 curtains depending on number of layers and pleats)

Lead time of ready-made curtain

- Customized: 10-12 weeks

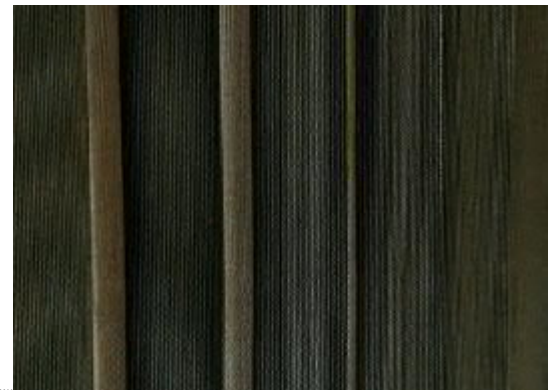


06 Polyester blackout curtain

The «light blocking» curtain



- Light blocking
- 22 colors available from stock
- Elegant looks with silky shine and soft hand
- Easy to wash, multiple times at 40°C / 104°F, or dry cleanable
- Lantal recommends the steam-pleated option for permanent pleats and a better look and feel



06 Polyester blackout curtain

Technical information

Material

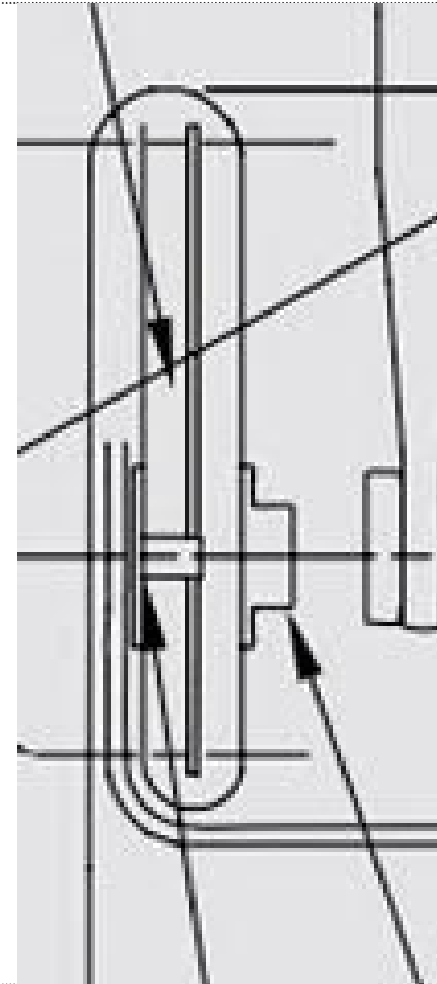
- Flame-resistant polyester (printed)

Weight and width

- Approx. 202 g/m², 6 oz/sy, tolerance $\pm 5\%$.
- Max. width 235 cm / 92.5 inches or 310 cm / 122 inches

Specifications

- Flame-resistant in accordance with FAR/CS 25.853
- Meets Airbus and Boeing specifications ABD0031/BMS 8-240 (smoke & toxicity)



06 Polyester blackout curtain

Minimum order quantity (MOQ) and lead time

MOQ

- Off the shelf: Depending on the width 5 or 10 lm (corresponds to two curtains)
- For customized raw material : 250 lm (approx. 50 curtains),

Lead time of ready-made curtain

- Stock: 6-8 weeks
- Customized: 10-12 weeks



07 Polyester blackout printed curtain

New innovative product with many areas of application

- Printable on both sides with individual designs, photos and colors
- Only available as a ready-made curtain
- Easy to wash, multiple times at 40°C / 104°F, or dry cleanable
- Areas of application:
 - Promote your brand
 - Promote your flight destination
 - Third party advertising
 - Create a seasonal atmosphere
 - Underline your interior design



07 Polyester blackout printed curtain

Examples of promoting events



07 Polyester blackout printed curtain

Example of promoting a holiday flight destination



07 Polyester blackout printed curtain

Technical information

Material

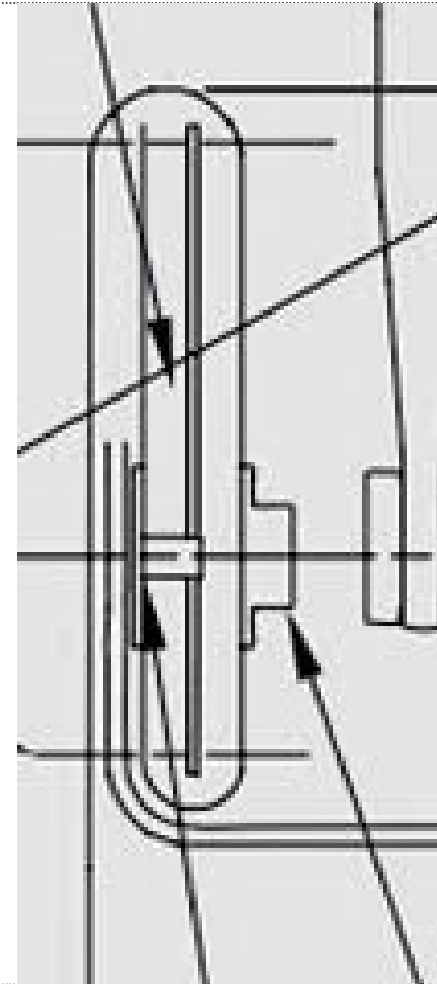
- Flame-resistant polyester
- Customized design (weave style: Dobby)

Weight and width

- Varies from 240 to 370 g/m², 7 to 11 oz/sy, tolerance $\pm 5\%$
- Max. width 235 cm / 92.5 inches when printed crosswise
- Max. width 310 cm / 122 inches when printed lengthwise

Specifications

- Flame-resistant in accordance with FAR/CS 25.853
- Meets Airbus and Boeing specifications ABD0031/BMS 8-240 (smoke & toxicity)



07 Polyester blackout printed curtain

Minimum order quantity (MOQ), lead time and base fabric

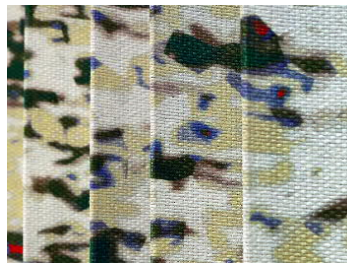
Base fabric

- Two different base fabrics are available:
 - Option 1: smooth surface on both sides, shinier
 - Option 2: one side has a structured surface and one side has a smooth surface, mat

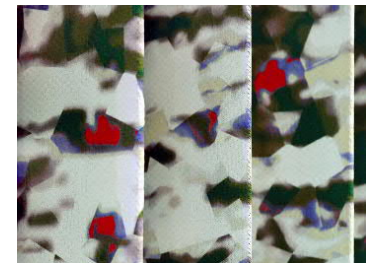
Option 1



Option 2:
side 1



Option 2:
side 2



MOQ

- Minimum order quantity of 10 curtains (60 lm of fabric)

Lead time of ready-made curtain

- Customized: 10-12 weeks

08 Polyamide meshed curtain

60% light transmission and compliance with TSA standards



- Knitware with very soft hand
- Different designs and colors available (3 colors available from stock)
- Matt/gloss effect for appealing looks
- 60% light transmission and compliance with TSA Standards
- Washable at max. 30°C (78°F) or dry cleaning as per Lantal cleaning recommendations
- Lantal recommends the natural plain option



08 Polyamide meshed curtain

Technical information



Material

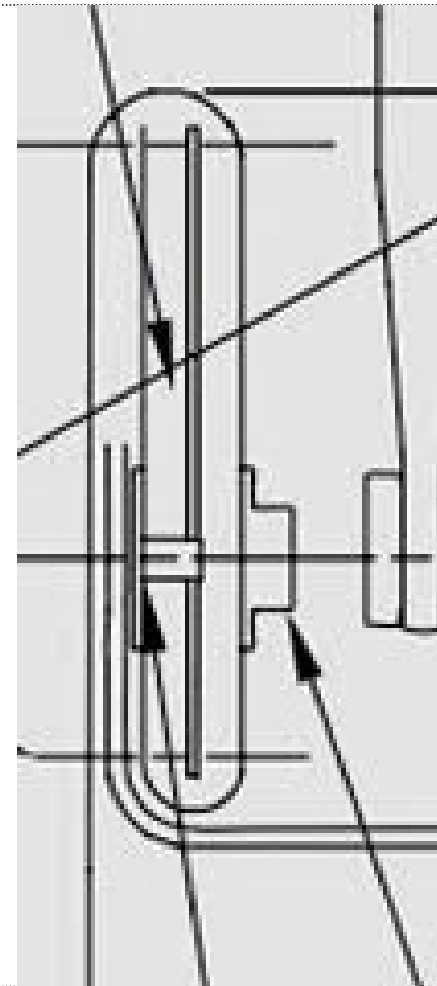
- 100% polyamide (nylon)
- Production process: Knitting

Weight and width

- Weight: 170 g/m², 5 oz/sy, tolerance $\pm 5\%$.
- Approx. width 127 cm, 50 inches

Specifications

- Flame-resistant in accordance with FAR/CS 25.853
- Meets Airbus and Boeing specifications ABD0031/BMS 8-240 (smoke & toxicity)



08 Polyamide meshed curtain

Minimum order quantity (MOQ) and lead time

MOQ

- Off the shelf raw material: 100 yd (91.4 lm, approx. 18 curtains)
- For customized raw material (color): 600 yd (550 lm) \pm 10%

Lead time of ready-made curtain

- Stock collection: 7-9 weeks
- Customized: 13-14 weeks



09 Laser-cut curtain

Special eye-catcher, a touch of openness in aircraft cabins

- Individual customized designs and degrees of transparency
- Different styles and sizes of perforations and laser cuts
- Add a touch of openness to aircraft cabins
- Easy to wash, multiple times at 40°C / 104°F, or dry cleanable
- Depending on the design, Lantal recommends the steam-pleated or the natural plain option



09 Laser-cut curtain

Good to know

- Laser cuts and perforations are also possible for all other Lantal polyester qualities (with limitation)
- The size of the dots (laser points) and cuts depends on the power of the laser tool and the fabric material



09 Laser-cut curtain

Different styles of perforation and laser cuts

Perforation



Cloud



Simple dots

Laser-cut



Laser-cut stripes



Wave lines

09 Laser-cut curtain

Technical information

Material

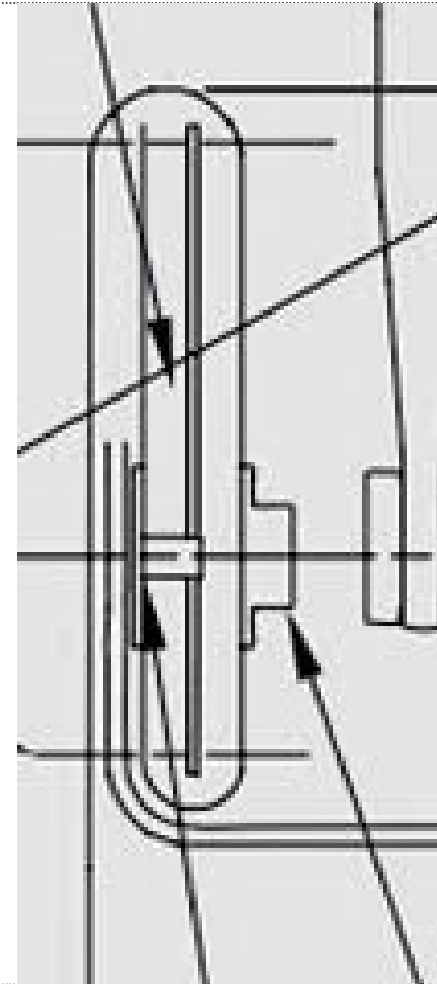
- Flame-resistant polyester (printable on both sides)
- Customized designs only (weave style: Dobby)

Weight and width

- Weight varies from 180 to 360 g/m², 5.3 to 10.6 oz/sy
- Approx. width 144 cm, 56.5 in

Laser limitations

- Perforation: Minimum diameter of dot: 1 mm
- Laser-cut: Minimum width of laser cut: 0.5 cm
- Width of laser pattern: Max. 180 cm, min. 60 cm
- Length of laser pattern: 66/67 cm



09 Laser-cut curtain

Minimum order quantity (MOQ) and lead time

MOQ

- Minimum production quantity 300 lm customized fabric (approx. 60 curtains)

Lead time of ready-made curtain

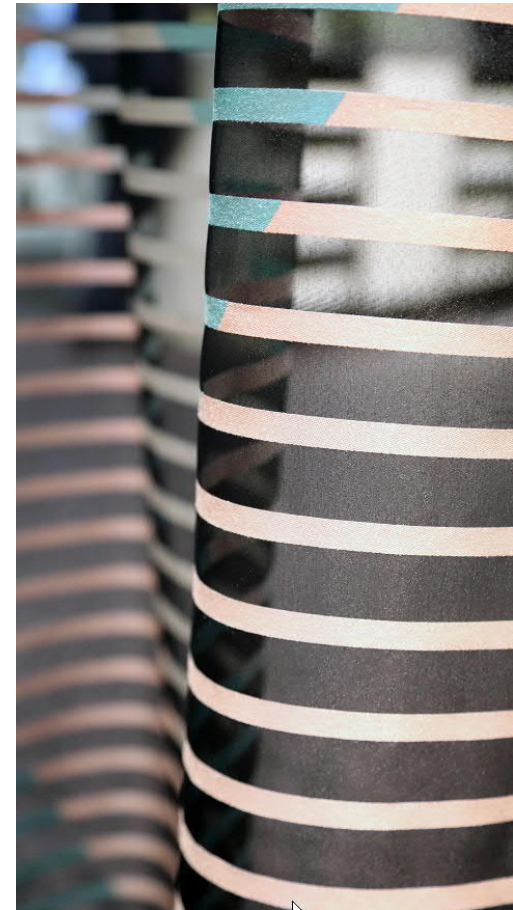
- According to prior agreement



10 Semi-transparent curtain

Varying transparency and printable on both sides

- With individual customized design for a homelike ambiance
- Varying degrees of transparency to create signature interiors
- Smooth, modern surface with subdued gloss
- Easy to wash, multiple times at 40°C / 104°F, or dry cleanable
- Lantal recommends the steam-pleated option for permanent pleats and a better look and feel



10 Semi-transparent curtain

Technical information

Material

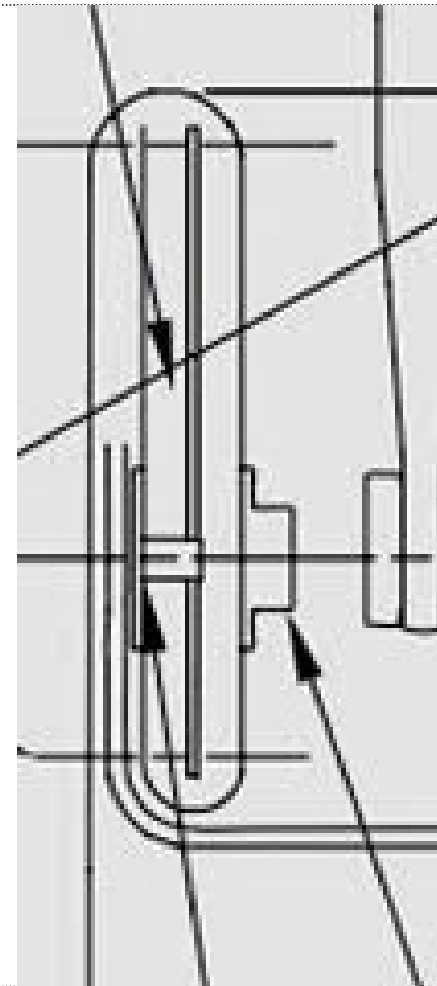
- Flame-resistant polyester
- Customized designs only (weave style: Dobby)

Weight and width

- Varies from 60 to 115 g/m², 1.7 to 3.4 oz/sy, tolerance $\pm 5\%$
- Max. width 235 cm / 92.5 inches when printed crosswise
- Max. width 310 cm / 122 inches when printed lengthwise

Specifications

- Flame-resistant in accordance with FAR/CS 25.853
- Meets Airbus and Boeing specifications ABD0031/BMS 8-240 (smoke & toxicity)



10 Semi-transparent curtain

Minimum order quantity (MOQ) and lead time

MOQ

- Minimum production of 100 lm customized fabric (approx. 25 curtains)

Lead time of ready-made curtain

- Customized: 10-12 weeks



11 Sound-absorbing curtain

Prevents galley noise and light from passing into the cabin



- An extra opaque inlayer in the curtain prevents galley noise and light from passing into the cabin
- Both sides are covered with high-absorption textiles that help reduce noise at the source or in the source room
- Available in two different thicknesses (“Extra” and “Light”)
- Wet cleanable in washing machines (delicates cycle)
- Lantal recommends the steam-pleated option for permanent pleats and a better look and feel

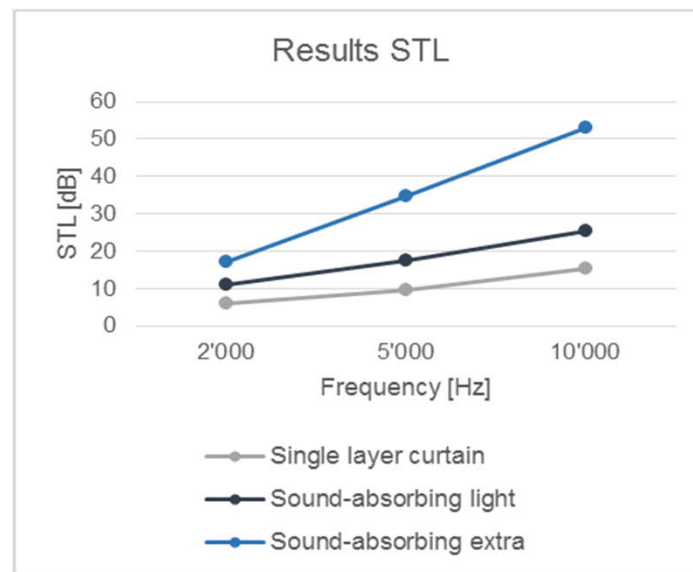


11 Sound-absorbing curtain

Test results show better Sound Transmission Loss (STL) results



- Lantal's acoustic curtains were tested under field conditions to compare Sound Transmission Losses (STL)
- Results show the better performance of sound-absorbing curtains due to the higher area weight and higher airflow resistivity compared to single-layer curtains



11 Sound-absorbing curtain

Technical information

Material

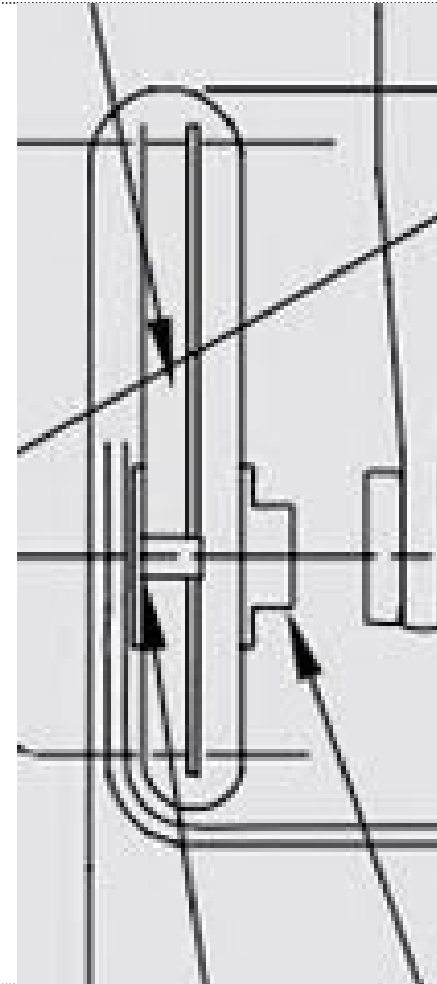
- Flame-resistant polyester and sound-absorbing inlayer

Weight and width

- Sound-absorbing curtain **light**:
Total weight: approx. 800-1000 g/m² (23.6-29.5 oz/sy)
Inlayer weight: 200 g/m² (5.9 oz/sy)
- Sound-absorbing curtain **extra**:
Total weight: approx. 1300-1400 g/m² (38.4-41.3 oz/sy)
Inlayer weight: 680 g/m² (20.1 oz/sy)

Specifications

- Flame-resistant in accordance with FAR/CS 25.853
- Meets Airbus and Boeing specifications ABD0031/BMS 8-240 (smoke & toxicity)



11 Sound-absorbing curtain

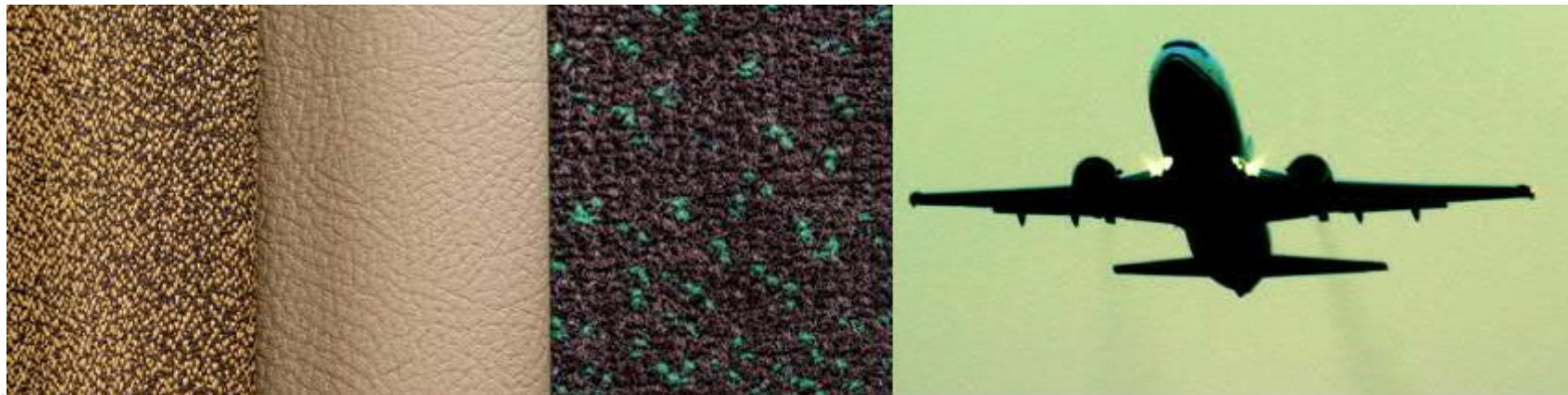
Minimum order quantity (MOQ) and lead time

MOQ

- Minimum production quantity depending on fabric material

Lead time of ready-made curtain

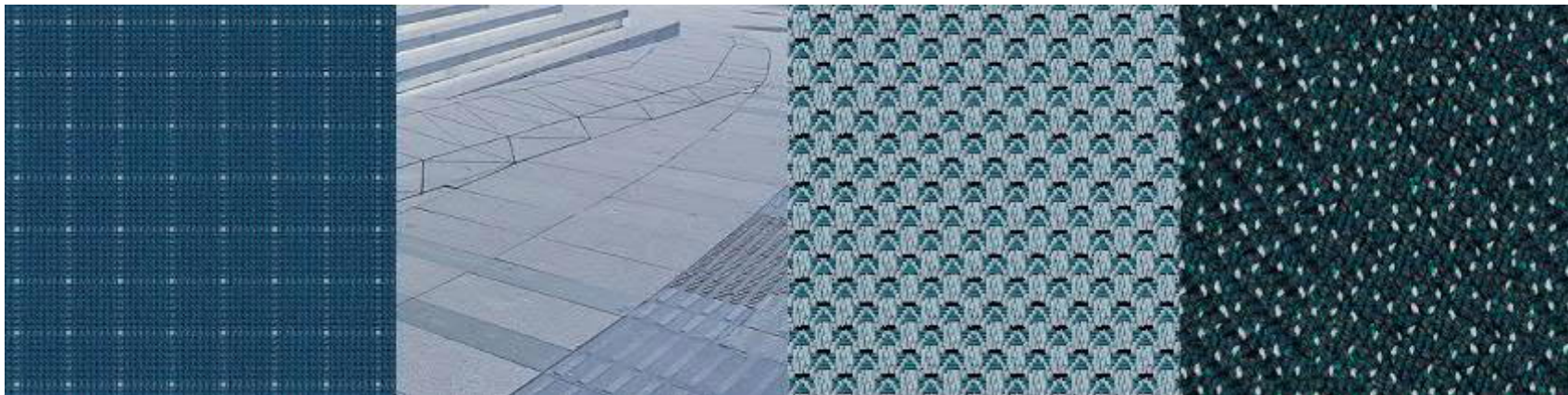
- Customized: 10-12 weeks



12 Wool curtain

Premium curtain with humidity regulation

- Premium curtain for customized designs and colors
- Adds warmth and elegance to the cabin
- Regulates air humidity: absorbs moisture and returns it to cabin air
- Lantal recommends the sewn-pleated option for permanent pleats



12 Wool curtain

Technical information

Material

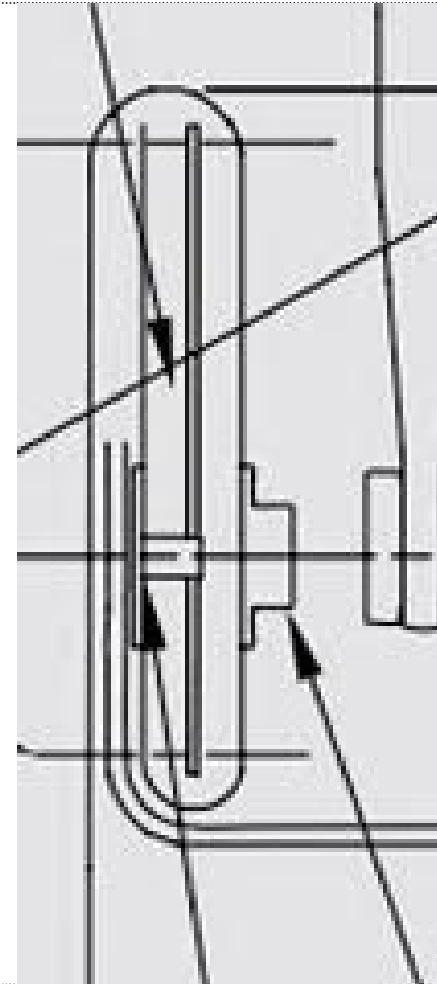
- 100% wool
- Weave style: Jacquard/Dobby

Weight and width

- Approx. 270 – 320 g/m², 7.9 – 9.4 oz/sy, tolerance \pm 5%.
- Approx. width 137 cm, 54 inches

Specifications

- Flame-resistant in accordance with FAR/CS 25.853
- Meets Airbus and Boeing specifications ABD0031/BMS 8-240 (smoke & toxicity)



12 Wool curtain

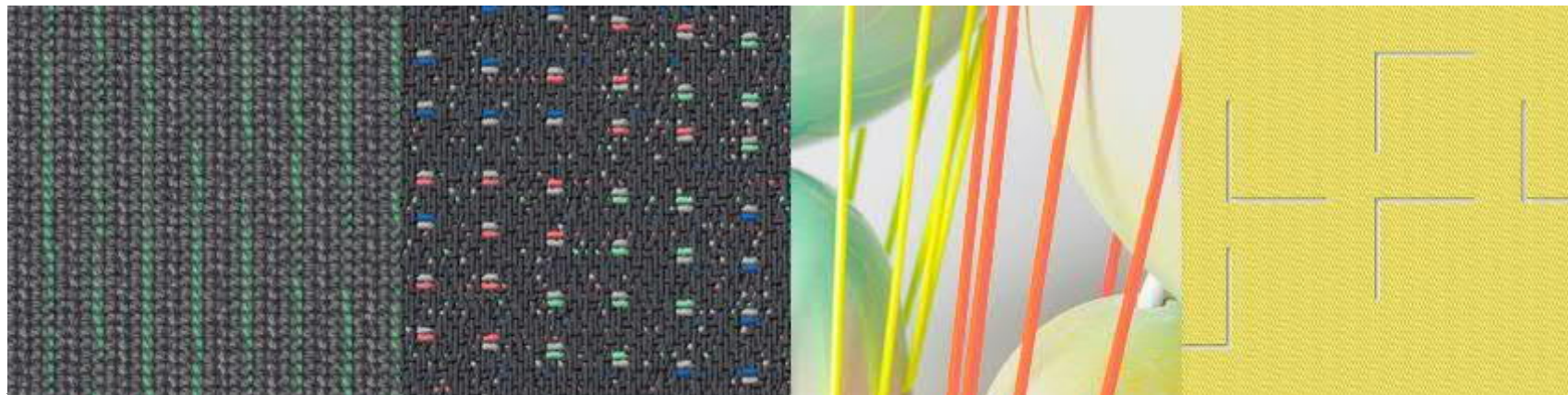
Minimum order quantity (MOQ) and lead time

MOQ

- Minimum production of 240 lm (approx. 40–50 curtains)

Lead time of ready-made curtain

- Customized: 10-12 weeks



13 Advantages of steam-pleated curtains - compared to sewn-pleated curtains

- Permanent pleats assure a **perfect look** across the curtain's lifetime
- Pleats always **retain their same good shape** even after numerous cleaning cycles
- **No pleat distortion** due to yarn contraction, the pleats remain straight and uniform, even when tied back
- **Easy to maintain**, no additional ironing needed after cleaning



13 Advantages of steam-pleated curtains - compared to sewn-pleated curtains

We did the test...

- Both curtains after washing 10 times at 40°C in a net bag and 3 times dry cleaning in a net bag



Steam-pleated curtain



Sewn-pleated curtain

Lantal recommends steam-pleated curtains!