



*Lantal's portfolio*  
*Presentation for Lantal customers*



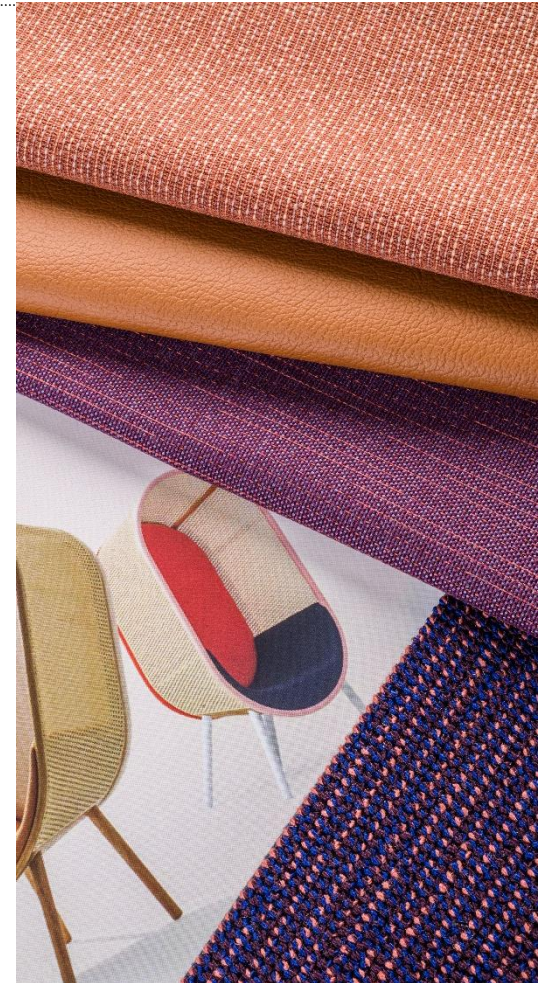


# Introduction

Serving all major airframe manufacturers and airlines, Lantal is a leader in the design, production, and distribution of textiles and services for the international community of aircraft, bus, and railway operators. Lantal has an excellent global reputation not only for creative textiles but also for premium carpets.

Lantal is the only single-source textile mill in the world that produces carpets, velvets and flat weaves for the transportation industry.

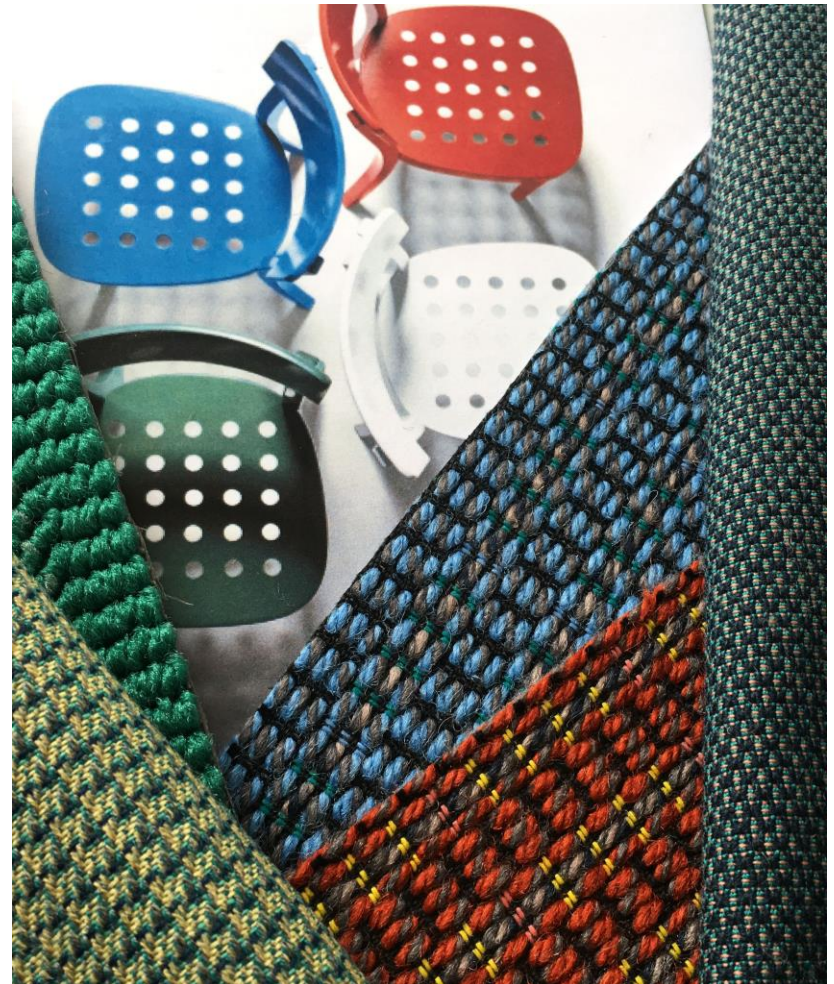
We have more than 130 years of experience in developing specific textile solutions for our customers.



# Table of contents

---

- 01 Carpets
- 02 Seat cover fabrics
- 03 Wall covering fabrics
- 04 All-in-one solutions





## *01. Lantal's carpet qualities*



# *Lantal's carpet mill*

## *Production facts and figures*

- Lantal's carpet weaving facility is equipped with 16 Jacquard looms and 1 dobby loom.
- Capacity p.a. of Jacquard 710'000 m<sup>2</sup>, of dobby 30'000 m<sup>2</sup>.
- Every hour, each loom weaves about 8 m<sup>2</sup> of carpet.
- To prevent electrostatic charging under very dry aircraft cabin climate conditions, an accurately calculated volume of special antistatic fibers is added to the wool.
- In manufacturing its premium wool carpets, Lantal mainly uses virgin wool sourced from New Zealand, which is globally recognized for its unique quality.





## *Lantal's carpet mill*



# *Lantal's wool carpets*

---

Wool carpets are natural, high-performance floorcoverings for hospitable aircraft cabin interiors.

Lantal's wool carpets are designed for service in Economy, Business, and First Class sections both on short- and long-haul routes.





# *Lantal's wool carpets*

## *Key advantages*



- Long-lasting visual appeal and superior looks
- Soft texture for enhanced underfoot comfort
- Natural insulating properties, both acoustic and thermal
- The wool fiber has intrinsic properties to prevent soiling. The natural oils and the structure of the fiber absorb the dirt and make it less visible.
- Wool is a resilient fiber which recovers after being compressed





# *Lantal's wool carpets*

## *Overview*



---

	<b>Wool standard</b>	<b>Wool extra</b>
<b>Composition</b>	100% wool	100% wool
<b>Weight (<math>\pm 5\%</math>)</b>	1'500 – 1'960 g/m <sup>2</sup>	1'600 – 3'300 g/m <sup>2</sup>
<b>Width</b>	200 cm / 252 cm	200 cm / 252 cm
<b>MOQ</b>	200 lm	200 lm
<b>Recommended application</b>	All classes and hauls	First and Business Class without heavy trolley use

---

# *Lantal's wool carpets*

## *Wool standard – Key features*



### **Weight**

The conditioned weight varies from 1'500 g/m<sup>2</sup>, 44 oz/sy to 1'960 g/m<sup>2</sup>, 58 oz/sy, tolerance  $\pm 5\%$

### **Service lifetime**

- aisles approx. 4 – 8 months
- under seats approx. 12 – 18 months

**Hardwearing:** Hexapod test grade 3.0 – 3.5 out of 5

**Brightening:** Slight optical brightening during use

**Soiling:** The wool fiber has intrinsic properties to prevent soiling. The natural oils and the structure of the fiber absorb the dirt and make it less visible.

### **Dimensional stability**

Very good dimensional stability  $\pm 0.5\%$

### **Design**

Many design possibilities, no color limitations





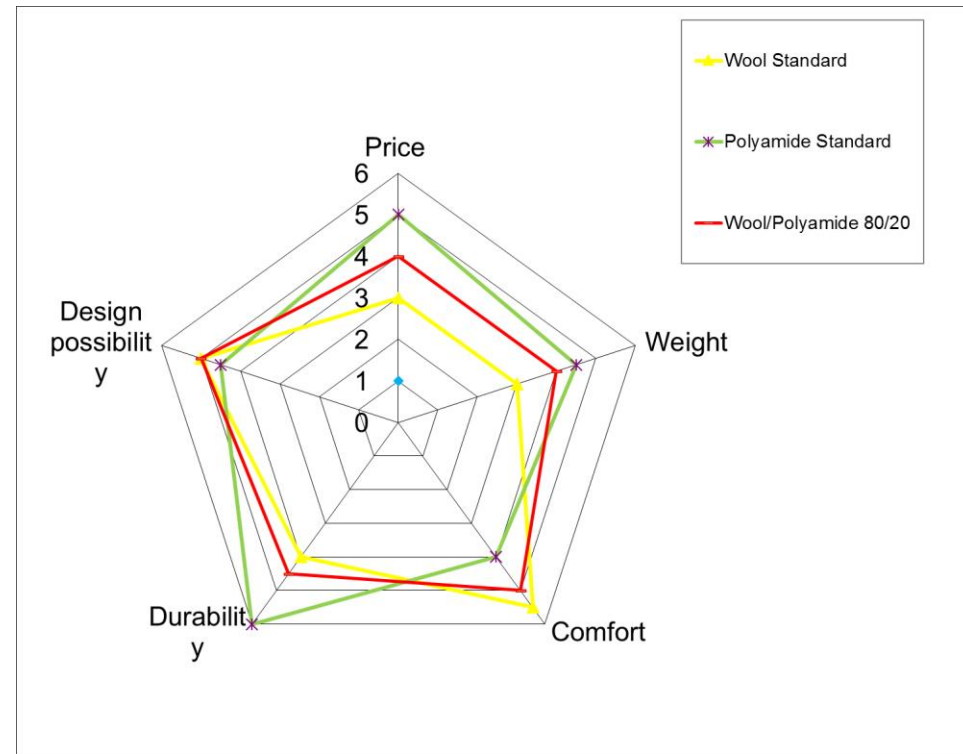
# Lantal's wool carpets

## Wool standard – Technical data



### Wool standard

<b>Composition</b>	100% wool
<b>Weight</b>	1'500 g/m <sup>2</sup> – 1'960 g/m <sup>2</sup> (± 5%)
<b>Design</b>	Many design possibilities, no color limitations
<b>Pile height</b>	3 – 5 mm
<b>Width</b>	200 cm / 252 cm
<b>MOQ</b>	200 lm
<b>Qualification</b>	Airbus: Qualified Boeing: Qualified



# *Lantal's wool carpets*

## *Wool extra – Key features*

### **Weight**

The conditioned weight varies from 1'600 g/m<sup>2</sup>, 47 oz/sy to 3'300 g/m<sup>2</sup>, 97 oz/sy, tolerance  $\pm 5\%$

### **Service lifetime**

- aisles approx. 4 – 8 months
- under seats approx. 8 – 18 months

**Hardwearing:** Hexapod test grade 2.5 – 3 out of 5

**Brightening:** Slight optical brightening during use

**Soiling:** The wool fiber has intrinsic properties to prevent soiling. The natural oils and the structure of the fiber absorb the dirt and make it less visible.

### **Dimensional stability**

Very good dimensional stability  $\pm 0.5\%$

### **Design**

Many design possibilities, no color limitations





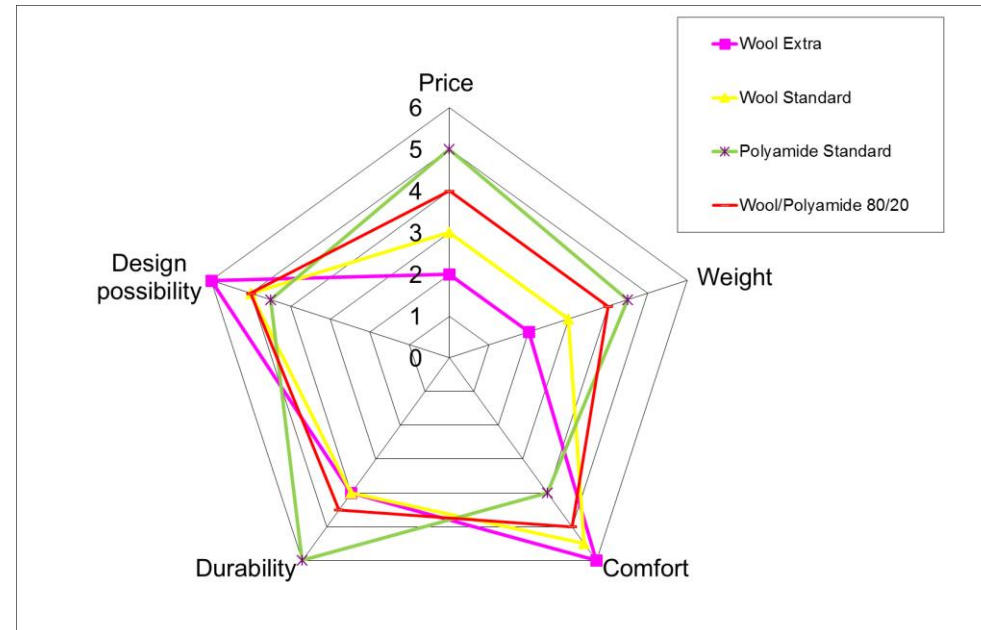
# Lantal's wool carpets

## Wool extra – Technical data



### Wool extra

<b>Composition</b>	100% wool
<b>Weight</b>	1'600 g/m <sup>2</sup> – 3'300 g/m <sup>2</sup> (± 5%)
<b>Design</b>	Many design possibilities, no color limitations
<b>Pile height</b>	3 – 8 mm
<b>Width</b>	200 cm / 252 cm
<b>MOQ</b>	200 lm
<b>Qualification</b>	Airbus: Qualified Boeing: Qualified



# Lantal's wool carpets

## Features overview

Criteria	Wool standard	Wool extra
Weight (g/m <sup>2</sup> ) (± 5%)	1'500 – 1'960 g/m <sup>2</sup>	1'600 – 3'300 g/m <sup>2</sup>
Lifetime in aisle (experience)	4 – 8 months	4 – 8 months
Lifetime under seat (experience)	12 – 18 months	8 – 18 months
Abrasion (hexapod)	Very good	Good
Design possibility	Various, no color limitations	Various, no color limitations
Flammability-, smoke-, tox- properties	Passed	Passed
Dimensional stability (%)	± 0.5	± 0.5
Installation	Self-adhesive carpet coating or double sided tape	Self-adhesive carpet coating or double sided tape
Serging	Serging recommended	Serging recommended
Airbus BFE Qualification Status	Qualified	Qualified
Boeing Qualification Status	Qualified	Qualified
Cleaning	Spray extraction	Spray extraction
Recommended application	Short-, medium-, and long-haul All classes	Long-haul First and Business Class



## *Lantal's wool blend carpets*

---

Lantal's wool blend carpets are optimized with regard to weight and abrasion and combine the best properties of wool and polyamide. The new basic construction and coating result to a longer service life and improved dimension stability.

Lantal's wool blend carpets are designed for service in Economy, Business, and First Class sections, both on short- and long-haul routes.



# *Lantal's wool blend carpets*

## *Key advantages*



- Long-lasting, excellent service life
- Intrinsic properties to prevent soiling due to the high share of wool.
- Less optical brightening and better abrasion results than wool carpets due to the share of polyamide fiber.
- High walking comfort due to the share of wool
- Various design possibilities with luster and glossy effect yarns for a more luxurious look.



# *Lantal's wool blend carpets*

## *Overview*



### **Wool/Polyamide 80/20**

### **Wool/Polyamide luster**

### **Wool/Polyamide light**

#### **Composition**

80% wool, 20% polyamide

80% wool, 20% polyamide

80% wool, 20% polyamide

#### **Weight ( $\pm 5\%$ )**

1'450 – 1'850 g/m<sup>2</sup>

1'520 – 2'400 g/m<sup>2</sup>

1'080 – 1'370 g/m<sup>2</sup>

#### **Width**

200 cm / 252 cm

200 cm / 252 cm

200 cm / 252 cm

#### **MOQ**

200 lm

200 lm

200 lm

#### **Recommended application**

All classes and hauls

All classes and hauls

Economy  
Short- and medium-haul



# *Lantal's wool blend carpets*

## *Wool/Polyamide 80/20 – Key features*

### **Minimized weight**

The conditioned weight varies from 1'450 g/m<sup>2</sup>, 43 oz/sy to 1'850 g/m<sup>2</sup>, 55 oz/sy, tolerance  $\pm$  5%.

### **Service lifetime**

- aisles approx. 7 – 10 months
- under seats approx. 14 – 20 months

**Hardwearing:** Hexapod test grade 3.75 – 4.0 out of 5

**Brightening:** Less optical brightening than standard wool carpets in use, due to the share of polyamide fiber

**Soiling:** The wool fiber has intrinsic properties to prevent soiling. The natural oils and the structure of the fiber absorb the dirt and make it less visible.

### **Dimensional stability**

Very good dimensional stability  $\pm$  0.5%

### **Design**

Many design possibilities, no color limitations



# *Lantal's wool blend carpets*

## *Wool/Polyamide 80/20 – Technical data*

### Wool/Polyamide 80/20

#### **Composition**

80% wool, 20% polyamide

#### **Weight**

1'450 - 1'850 g/m<sup>2</sup> (± 5%)

#### **Design**

Customized designs

#### **Width**

200 cm / 252 cm

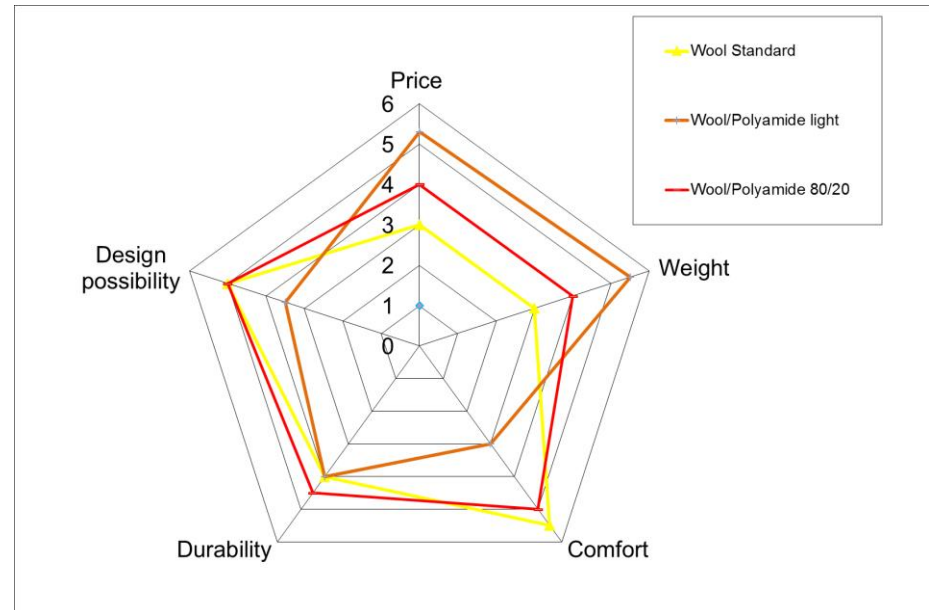
#### **MoQ**

200 lm

#### **Qualification**

Airbus: Qualified

Boeing: In progress



# *Lantal's wool blend carpets*

## *Wool/Polyamide luster – Key features*

### **Weight**

The conditioned weight varies from 1'520 g/m<sup>2</sup>, 45 oz/sy to 2'400 g/m<sup>2</sup>, 71 oz/sy, tolerance  $\pm 5\%$

### **Service lifetime**

- aisles approx. 6 – 12 months
- under seats approx. 12 – 18 months

**Hardwearing:** Hexapod test grade 3.0 – 3.5 out of 5

**Brightening:** Less optical brightening than standard wool carpets in use, due to the share of polyamide fiber

**Soiling:** The wool fiber has intrinsic properties to prevent soiling

### **Dimensional stability**

Very good dimensional stability  $\pm 0.5\%$

### **Design**

Various design possibilities with luster and glossy effect yarns for a more luxurious look



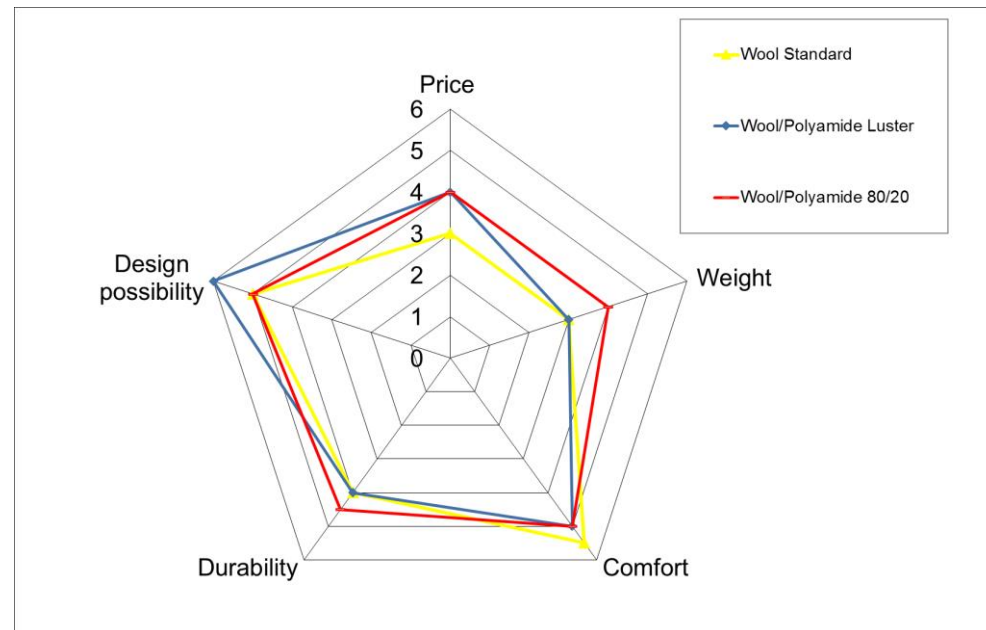


# *Lantal's wool blend carpets*

## *Wool/Polyamide luster – Technical data*

### Wool/Polyamide luster

<b>Composition</b>	80% wool, 20% polyamide
<b>Weight</b>	1'520 g/m <sup>2</sup> – 2'400 g/m <sup>2</sup> (± 5%)
<b>Design</b>	Various possibilities with glossy and effect yarns
<b>Width</b>	200 cm / 252 cm
<b>MOQ</b>	200 lm
<b>Qualification</b>	Airbus: Qualified Boeing: Ongoing



# *Lantal's wool blend carpets*

## *Wool/Polyamide light – Key features*

### **Minimized weight**

The conditioned weight is 1'080 g/m<sup>2</sup>, 32 oz/sy, to 1'370 g/m<sup>2</sup>, 40 oz/sy tolerance  $\pm$  5%.

### **Service lifetime**

- Aisles: 1'080 – 1'290 g/m<sup>2</sup>: approx. 3 – 6 months  
          >1'300 g/m<sup>2</sup>: approx. 6 – 12 months
- under seats: 1'080 – 1'290 g/m<sup>2</sup>: approx. 10 – 18 months  
              >1'300 g/m<sup>2</sup>: approx. 12 – 18 months

**Hardwearing:** Hexapod test grade 3.5 – 4.0 out of 5

**Brightening:** Less optical brightening than standard wool carpets in use, due to the share of polyamide fiber

**Soiling:** Wool has an inbuilt resistance which acts as a shield against dirt

### **Dimensional stability**

Very good dimensional stability  $\pm$  0.5%

### **Design**

1-frame; simple designs enriched with mouliné



# *Lantal's wool blend carpets*

## *Wool/Polyamide light – Technical data*

### **Wool/Polyamide light**

<b>Composition</b>	80% wool, 20% polyamide
<b>Weight</b>	1'080 – 1'370 g/m <sup>2</sup> (± 5%)
<b>Design</b>	1-frame / mouliné
<b>Width</b>	200 cm / 252 cm
<b>MoQ</b>	200 lm
<b>Qualification</b>	Airbus: Qualified Boeing: Not possible





# Lantal's wool blend carpets

## Features overview

Criteria	Wool/Polyamide 80/20	Wool/Polyamide luster	Wool/Polyamide light
Weight (g/m <sup>2</sup> ) (± 5%)	1'450 – 1'850 g/m <sup>2</sup>	1'520 – 2'400 g/m <sup>2</sup>	1'080 – 1'370 g/m <sup>2</sup>
Lifetime aisle (experience)	7 – 10 months	6 – 12 months	1'080 – 1'290 g/m <sup>2</sup> : 3 – 6 months >1'300 g/m <sup>2</sup> : 6 – 12 months
Lifetime under seat (experience)	14 – 20 months	12 – 18 months	1'080 – 1'290 g/m <sup>2</sup> : 10 – 18 months >1'300 g/m <sup>2</sup> : 12 – 18 months
Abrasion (Hexapod)	Very good	Very good	Very good
Design possibility	Various, no color limitations	Various, luster and glossy effect yarns	1-frame (mouliné)
Flammability, smoke, tox properties	Passed	Passed	Passed
Dimensional stability (%)	± 0.5	± 0.5	± 0.5
Installation	Self-adhesive carpet coating or double sided tape	Self-adhesive carpet coating or double sided tape	Self-adhesive carpet coating or double sided tape
Serging	Serging recommended	Serging recommended	Serging recommended
Airbus BFE Qualification Status	Qualified 😊 (square loop & float loop)	Qualified 😊	Qualified 😊
Boeing Qualification Status	In progress	In progress	Not possible (too light)
Cleaning	Spray extraction	Spray extraction	Spray extraction
Recommended application	All classes Short-, medium-, and long-haul	All classes Depending on construction of design	Economy Short-, medium-, and long-haul

## *Lantal's polyamide (nylon) carpets*

---

Lantal's polyamide carpets are weight-optimized and – due to its ruggedness – very suitable for high short-haul passenger frequencies.

They feature a synthetic fiber back weave as well as a latex back coating and can be custom-woven to accommodate signature elements of your livery.



# *Lantal's polyamide (nylon) carpets*

## *Key advantages*



- Perceptibly lighter than standard wool carpets
- The use of polyamide filament yarns reduces the weight of the carpet without impairing abrasion resistance
- Hardwearing, excellent service lifetime
- Nylon fibers have their own character; in terms of coloration, the carpet may look shinier compared to wool carpets
- Many design options and 112 yarn colors are available
- Latest-generation polyamide yarns minimize soil adhesion, easier soil removal





# *Lantal's polyamide (nylon) carpets*

## *Overview*



---

### **Polyamide standard**

---

#### **Composition**

100% polyamide

#### **Weight ( $\pm 5\%$ )**

1'350 – 1'450 g/m<sup>2</sup>

#### **Width**

200 cm / 252 cm

#### **MOQ**

1'000 lm

#### **Recommended application**

All classes and hauls

---

### **Polyamide light**

---

100% polyamide

1'080 – 1'210 g/m<sup>2</sup>

200 cm / 252 cm

1'000 lm

Economy

Short-, medium-, and  
long-haul

# *Lantal's polyamide (nylon) carpets*

## *Polyamide standard – Key features*



### **Low weight**

The conditioned weight varies from 1'350 g/m<sup>2</sup>, 40 oz/sy to 1'450 g/m<sup>2</sup>, 43 oz/sy, tolerance  $\pm 5\%$

### **Service lifetime**

- aisles approx. 11 – 14 months
- under seats approx. 18 – 26 months

**Hardwearing:** Hexapod test grade 4.5 out of 5

**Brightening:** No optical brightening in use

**Soiling:** The new generation of the polyamide yarn minimizes soil adhesion, nevertheless easier soiled than wool or wool/polyamide carpets. Regular cleaning is essential.

### **Dimensional stability**

Very good dimensional stability  $\pm 0.5\%$

### **Design**

Many design options and 112 yarn colors are available

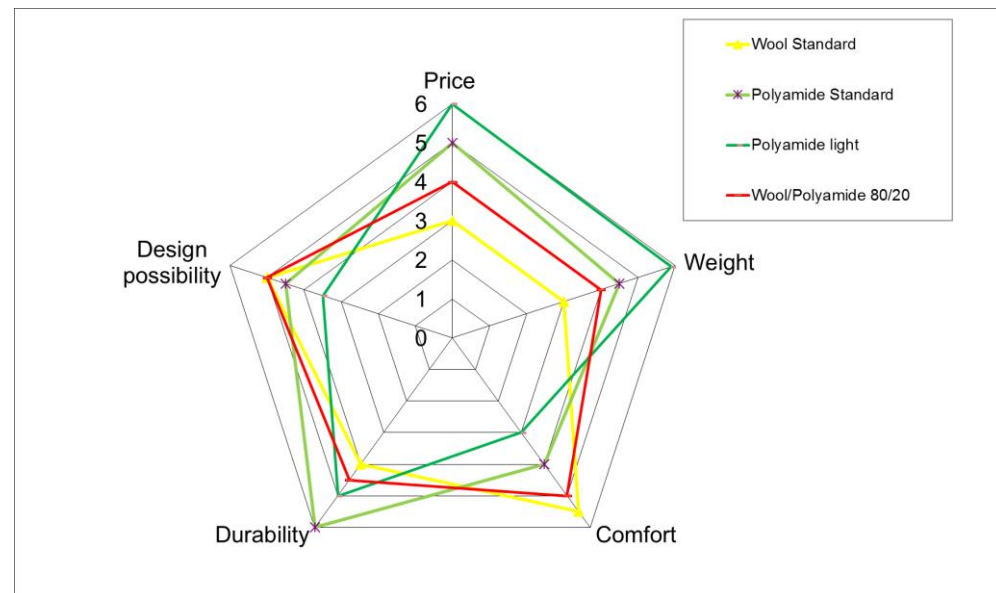


# *Lantal's polyamide (nylon) carpets*

## *Polyamide standard – Technical data*

### **Polyamide standard**

<b>Composition</b>	100% polyamide
<b>Weight</b>	1'350 – 1'450 g/m <sup>2</sup> (± 5%)
<b>Design</b>	Many design possibilities 112 yarn colors
<b>Width</b>	200 cm / 252 cm
<b>MOQ</b>	1,000 lm
<b>Qualification</b>	Airbus: Qualified Boeing: Ongoing



# *Lantal's polyamide (nylon) carpets*

## *Polyamide light – Key features*

### **Minimized weight**

The conditioned weight is 1'080 g/m<sup>2</sup>, 32 oz/sy, to 1'210 g/m<sup>2</sup>, 36 oz/sy tolerance  $\pm$  5%.

### **Service lifetime**

- aisles approx. 9 – 12 months
- under seats approx. 16 – 22 months

**Hardwearing:** Hexapod test grade 4.25 out of 5

**Brightening:** No optical brightening in use

**Soiling:** The new generation of polyamide yarn minimizes soil adhesion, nevertheless easier soiled than wool and need regular cleaning

### **Dimensional stability**

Very good dimensional stability  $\pm$  0.5%

### **Design**

1-frame; simple designs enriched with mouliné



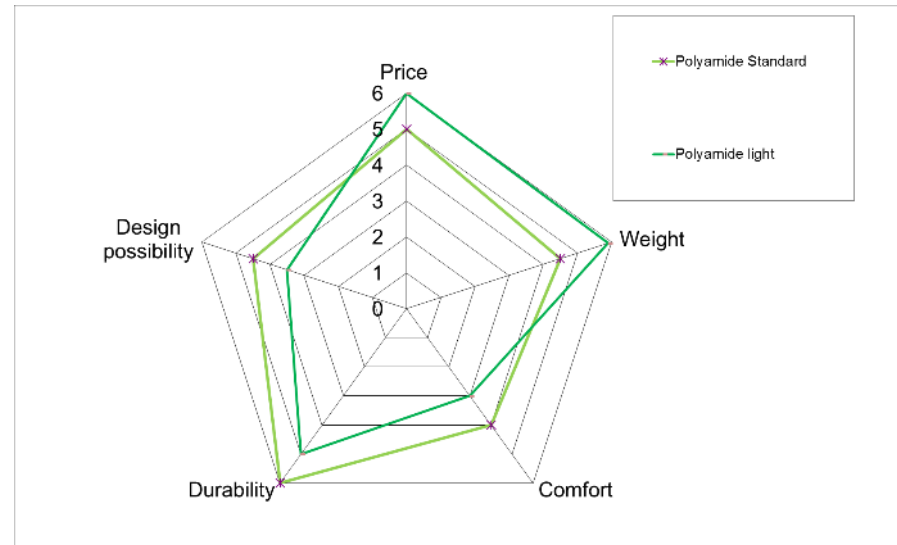


# Lantal's polyamide (nylon) carpets

## Polyamide light – Technical data

### Polyamide light

<b>Composition</b>	100% polyamide
<b>Weight</b>	1'080 – 1'210 g/m <sup>2</sup> (± 5%)
<b>Design</b>	1-frame / mouliné
<b>Width</b>	200 cm / 252 cm
<b>MOQ</b>	1,000 lm
<b>Qualification</b>	Airbus: Qualified Boeing: Not possible



# Lantal's polyamide (nylon) carpets

## Features overview

Criteria	Polyamide standard	Polyamide light
Weight (g/m <sup>2</sup> )	1'350 – 1'450 g/m <sup>2</sup>	1'080 – 1'210 g/m <sup>2</sup>
Lifetime aisle (experience)	11 – 14 months	9 – 12 months
Lifetime under seat (experience)	18 – 26 months	16 – 22 months
Abrasion (Hexapod)	Excellent	Excellent
Design possibility	Various, 112 colors	1-frame (mouliné)
Flammability, smoke, tox properties	Passed	Passed
Dimensional stability (%)	± 0.5	± 0.5
Installation	Self-adhesive carpet coating or double sided tape	Self-adhesive carpet coating or double sided tape
Serging	Serging recommended	Serging recommended
Airbus BFE Qualification Status	Qualified	Qualified
Boeing Qualification Status	In progress	Not possible (too light)
Cleaning	Spray extraction	Spray extraction
Recommended application	All classes Short-, medium-, and long-haul	Economy class Short-, medium-, and long-haul

# *Lantal's carpets - features*

## *Self-adhesive carpet coating*

- This method speeds up the carpet laying process and eliminates the need for additional auxiliary products.
- The carpet is easy to install and after the end of the carpet's life cycle, the parts can be removed without leaving adhesive traces behind.
- The self-adhesive backing remains at the back of the carpet when removed and it does not change its properties as long as it is kept clean (no dust/dirt should touch the carpet backing at all, otherwise a high adherence of the carpet cannot be guaranteed anymore).
- Weight of adhesive:  $80 \text{ g/m}^2 \pm 25 \text{ g}$  or  $125 \text{ g/m}^2 \pm 25 \text{ g}$
- The self-adhesive coating is applied to the carpet rolls (max. 200 cm wide). The carpet is delivered in lengths or pre-cut, shaped segments.



# *Lantal's carpets - features*

## *Self-adhesive carpet coating – Advantages*

Lantal's self-adhesive carpet coating features the following advantages:

- Cost- and time-effective carpet installation, up to 80% less time needed for installation
- No additional adhesive tape needed
- Easy to remove without traces on floor panels
- Practically no cleaning of panel surfaces required
- The self-adhesive coating can be applied to any woven carpet
- Protective film peels off easily, expedites simple installation
- Qualified by Boeing for the B787 Dreamliner





## *Lantal's VIP carpets*

---

Lantal's VIP carpets fulfill the loftiest expectations. The VIP carpets stand out with superb looks and premium quality.

Lantal's VIP carpets are designed for service in First Class sections and VIP Jets.



# *Lantal's VIP carpets*

## *Key advantages*



---

Lantal's VIP carpets open up a dream world of resources that will inspire the design of the most exquisite aircraft interiors.

Lantal's design team can assist you in developing an interior that precisely reflects your taste.

Longevity, high underfoot comfort, and long-lasting suppression of static charging are assets of Lantal's pure wool VIP carpets.



# *Lantal's VIP carpets*

## *Handmade & Handmade deluxe – Key features*



In hand-tufting, not unlike painting, no limits apply with regard to the form, size, composition, and structure of a carpet. Lantal's hand-tufted carpets are superb examples of Swiss craftsmanship – and acclaimed for their elegant designs.

Crafted from the finest wool or wool/silk blends, these carpets feature unique and fascinating effects. The incomparable interplay of their surface textures highlights exquisite silk motifs



# *Lantal's VIP carpets*

## *Handmade – Technical data*



	Handmade	Handmade deluxe
Composition	100% wool up to 50% wool / 50% silk	50% wool / 50% silk (intimate blend)
Weight	4'000 g/m <sup>2</sup> – 5'500 g/m <sup>2</sup> (± 5%)	3'800 g/m <sup>2</sup> – 5'500 g/m <sup>2</sup> (± 5%)
Pile height	Cut 10 – 30 mm Loop 8 – 20 mm	10 – 20 mm
Design	No limitations	No limitations
Width	Up to 9 m x 30 lm	Up to 9 m x 30 lm
MOQ	5 m <sup>2</sup>	5 m <sup>2</sup>
Recommended application	VIP jets and First Class	Only for VIP jets



# *Lantal's VIP carpets*

## *Wool velvet deluxe – Key features*



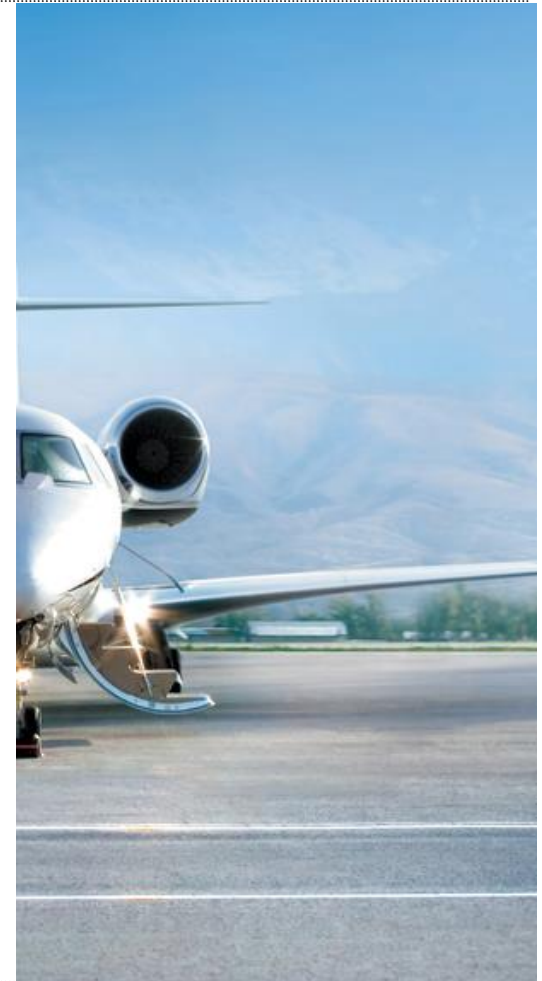
---

Upscale velvety look and feel for a homelike ambiance

Excellent walking comfort

Hardwearing, very long service life

Excellent cut fastness: no serging of the edges required



# *Lantal's VIP carpets*

## *Wool velvet deluxe – Technical data*

### **Wool velvet deluxe**

<b>Composition</b>	100% wool
<b>Weight</b>	4'025 g/m <sup>2</sup> (± 10%)
<b>Pile height</b>	14 mm
<b>Width</b>	200 cm / 400 cm
<b>MOQ</b>	100 m <sup>2</sup>
<b>Colors</b>	9 standard colors Customer-specific colors possible
<b>Application</b>	VIP jets and First Class



---

The availability of all competencies from a single source allows us to implement your project quickly, efficiently, and to high quality standards. You benefit from the fact that Lantal's subsidiary ASI is certified as a Design Organization (DO, EASA Part 21 J) and from Lantal's certification as a Production Organization (PO, EASA Part 21 G).



## *Parts & services*

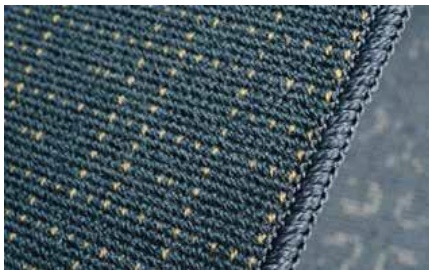
### *Pre-cut and serged carpets*

Lantal can provide added value by delivering pre-cut and serged carpets.

On request, Lantal can cut your carpets to size prior to delivery. Pre-cut carpets can be:

- Yardage cut to width
- Rectangular tiles cut to size
- Shapes pre-cut exactly to size

Lantal can deliver expertly serged carpets. Serging is a functionally useful and visually attractive way to finish the edge of a carpet and also serves as a discreet design element.



Tone-on-tone serging



Contrast serging



Speed serging



## *Parts & services*

### *Ready-to-install products*

Lantal has the know-how and resources needed to manage the entire process from the kick-off to doorstep delivery, including the official EASA Form 1.

The status as Design Organization (EASA Part 21 J) allows Lantal's subsidiary ASI to develop, test, and certify modifications to aircraft interior parts. As an approved Production Organization (PO, EASA Part 21 G), Lantal is authorized to manufacture parts according to approved design data and to ship them with an EASA Form 1.



---

Thorough care and maintenance will prolong the attractive appearance of the pile. Provided that the correct cleaning procedures are respected, the carpet will remain in good condition for an extended period of time. It is highly recommendable to set up a cleaning/maintenance plan and institutionalize the respective procedures.



# *Maintenance & cleaning*

## *Wool, wool blend and polyamide carpets*

Our experience-based recommendations include cleaning the carpet during the flight in the event of accidental soiling as well as routine cleaning on the ground.

- **Daily cleaning inside the aircraft**

The carpet should be vacuumed as often as possible because this will remove most of the dirt and dust brought into the cabin by shoes.

- **Soiling during flights**

Dirt and stains may occur at any time. Immediate attention to spills generally prevents the development of stubborn stains. Fresh stains and liquids should be attended to immediately by using tissues or white towels – just dab the spots.



# *Maintenance & cleaning*

## *Wool, wool blend and polyamide carpets*

- **Stain removal after flights**

To thoroughly and successfully remove stains after a flight, cleaning with a special product is indispensable.

- **Deep cleaning with encapsulation cleaning method**

After the flight and when removing carpet parts, we recommend deep cleaning the pile with an encapsulation cleaning method. The system is almost dry and the carpet is directly walkable after the treatment. Compared to traditional systems this procedure saves a lot of water.

For VIP carpets see Lantal's cleaning recommendations.





## *02. Lantal's seat cover fabrics*



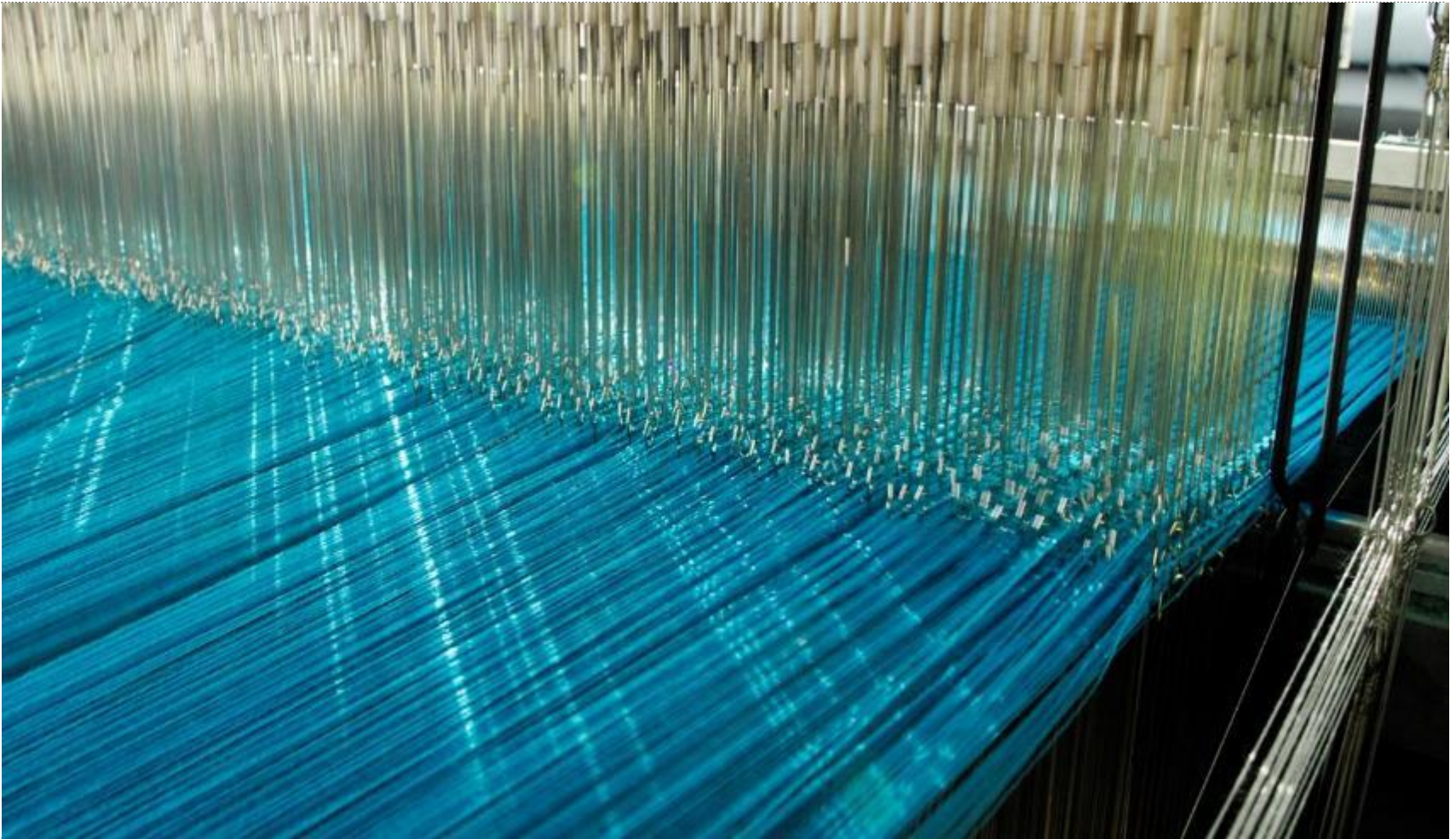
# *Lantal's flat weave mill*

## *Production facts and figures*

- Lantal's flat weave mill is equipped with 18 jacquard looms, 8 dobby looms and 4 sample looms.
- Capacity p.a. of Jacquard 800'000 lm, of dobby 280'000 lm.
- The hourly output is up to 9 linear meters of jacquard fabric and 12 linear meters of dobby fabric.
- Quality and reliability are the keys in Lantal's premium textiles: The team leaders in the mill individually adjust the looms for each order and supervise production in three shifts to assure on-time delivery.



## *Lantal's flat weave mill*

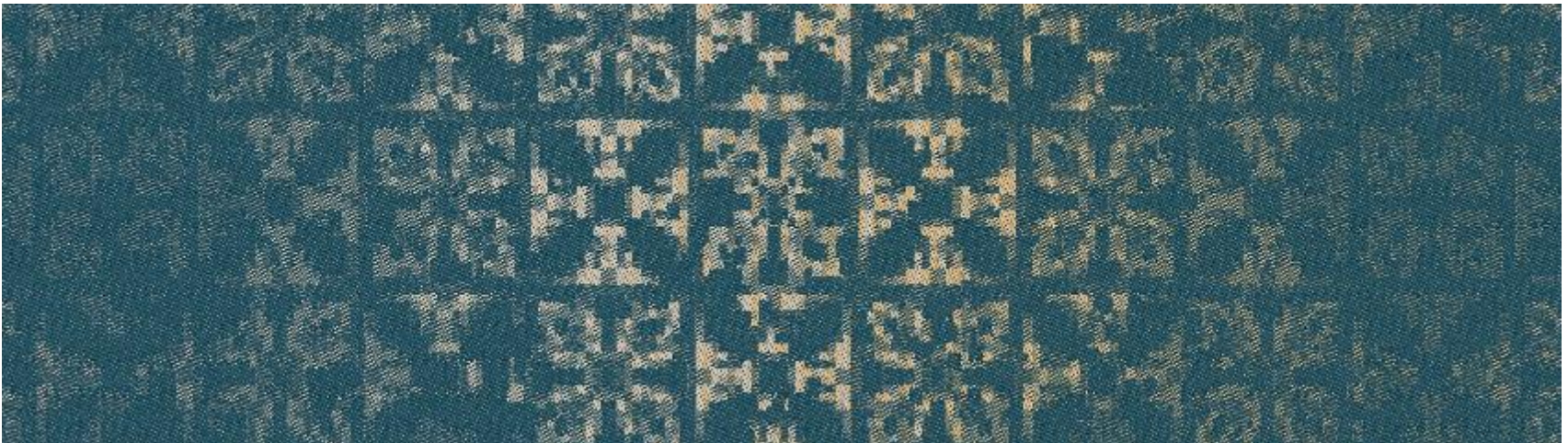




## *Lantal's wool blend seat cover fabrics*

---

Our wool blend seat cover fabrics stand out with longevity and wear-resistance. The breathable composition guarantees a pleasant seating experience with a high level of comfort. Additionally, the material prevents pilling.





# *Lantal's wool blend seat cover fabrics*

## *Key advantages*

- Long-lasting visual appeal and superior looks
- Good seating comfort due to excellent absorption of perspiration
- Regulates air humidity: absorbs moisture and returns it to air cabin
- Pill-free
- A very long lifetime due to high abrasion resistance
- Possibilities for additional finishings



# *Lantal's wool blend seat cover fabrics*

## *Overview*



### **Wool blend standard**

### **Wool blend extra**

### **Wool blend basic**

#### **Composition**

89 – 95% wool  
11 – 5% polyamide

Wool, polyamide and  
synthetic effect yarns

90 – 95% wool  
10 – 5% polyamide

Guaranteed pill-free due to  
the use of patented  
Crespino yarn

Guaranteed pill-free due to  
the use of patented  
Crespino yarn

#### **Weight ( $\pm 5\%$ )**

330 – 500 g/m<sup>2</sup>

370 – 700 g/m<sup>2</sup>

380 – 500 g/m<sup>2</sup>

#### **Width**

137 cm

137 cm

137 cm

#### **MOQ**

240 lm

240 lm

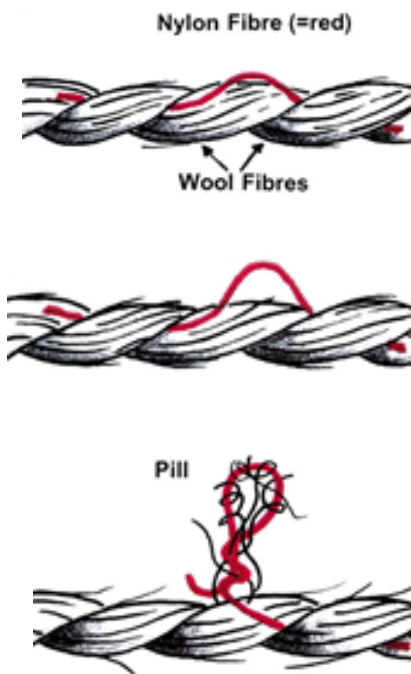
275 lm

# Lantal's wool blend seat cover fabrics

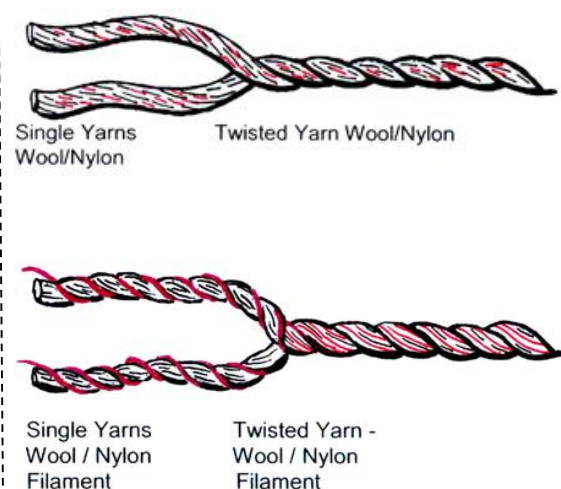
*Crespino (wool blend standard and extra) – Guaranteed pill-free*

- Lantal seat cover fabrics are permanently pill-free regardless of the number of dry cleaning cycles thanks to the Crespino yarn – an exclusive Lantal technology patented worldwide
- Fabrics have the same look and remain soft and subtle to touch like usual wool/nylon seat covers.
- Excellent dimensional stability after dry cleaning
- No limits to patterning and designs

Usually wool/nylon pills:



Lantal Crespino yarn – no pilling



# *Lantal's wool blend seat cover fabrics*

## *Wool blend standard – Key features*

### **Weight**

The conditioned weight varies from 330 g/m<sup>2</sup>, 10 oz/sy to 500 g/m<sup>2</sup>, 15 oz/sy, tolerance  $\pm$  5%

### **Service lifetime**

→ approx. 4 – 5 years

**Abrasion resistance:** 20'000 – 60'000 rubs depending on the construction

**Pill-free:** Atlas random pilling test – 5 of maximum 5. Permanently pill-free thanks to Crespino yarn – an exclusive Lantal technology

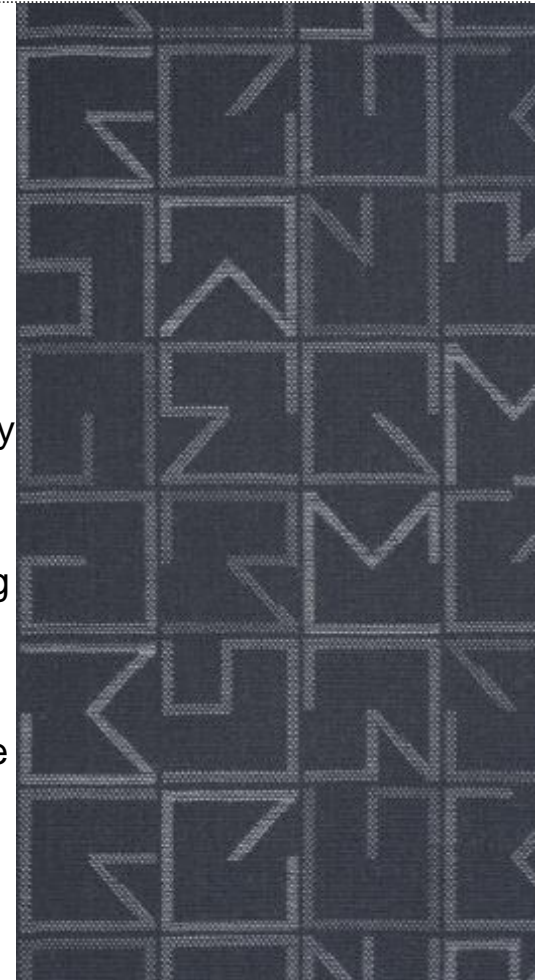
**Flammability:** Can be dry-cleaned at least 20 times before they cease to be flame retardant if cleaned according to Lantal cleaning recommendation.

### **Optional lamination**

For improved seating comfort and enhanced looks, Lantal can back the fabric with a seat lamination

### **Design**

Many design possibilities, no color limitations





# Lantal's wool blend seat cover fabrics

## Wool blend standard – Technical data

### Wool blend standard

#### Composition

89 – 95% wool

11 – 5% polyamide

The composition depends on the construction of the fabric

#### Weight

330 g/m<sup>2</sup> – 500 g/m<sup>2</sup>

(± 5%)

#### Design

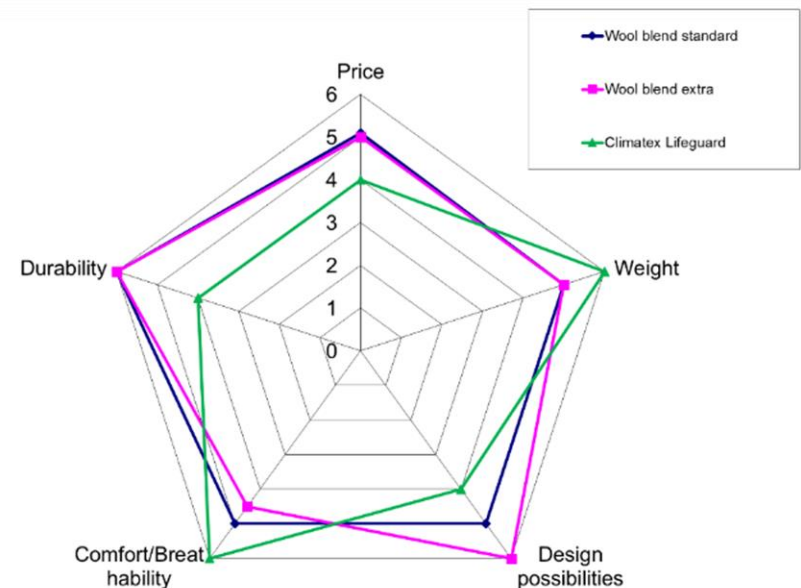
Many design possibilities,  
no color limitations

#### Width

137 cm

#### MOQ

240 lm



# *Lantal's wool blend seat cover fabrics*

## *Wool blend extra – Key features*



### **Weight**

The conditioned weight varies from 350 g/m<sup>2</sup>, 10 oz/sy to 700 g/m<sup>2</sup>, 21 oz/sy, tolerance  $\pm 5\%$

### **Service lifetime**

→ approx. 4 – 5 years

**Abrasion resistance:** 20'000 – 60'000 rubs depending on the construction

**Pill-free:** Atlas random pilling test – 5 of maximum 5.

Permanently pill-free thanks to Crespino yarn – an exclusive Lantal technology

### **Optional lamination**

For improved seating comfort and enhanced looks, Lantal can back the fabric with a seat lamination

### **Design**

Many design possibilities with luster and glossy effect yarns



# Lantal's wool blend seat cover fabrics

## Wool blend extra – Technical data



### Wool blend extra

#### Composition

Wool, polyamide and  
synthetic effect yarns

#### Weight

350 g/m<sup>2</sup> – 700 g/m<sup>2</sup>  
(± 5%)

#### Design

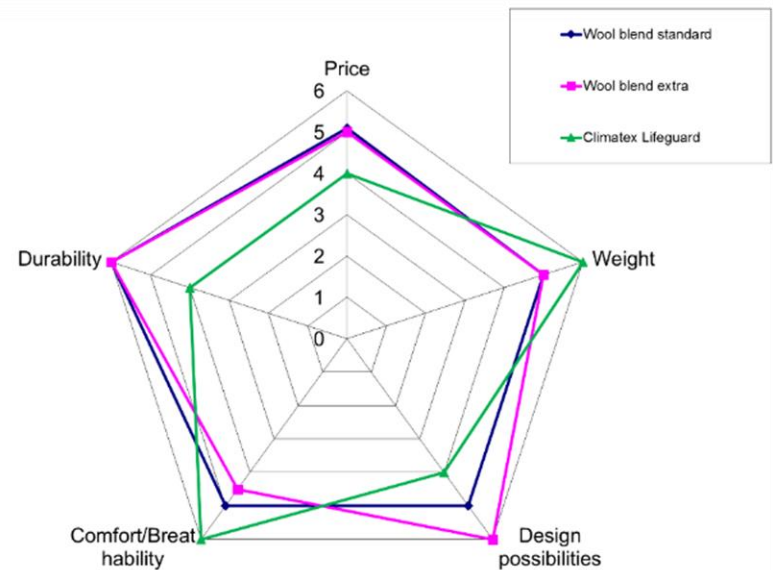
Many possibilities with  
glossy and effect yarns

#### Width

137 cm

#### MOQ

240 lm



# *Lantal's wool blend seat cover fabrics*

## *Wool blend basic – Key features*



### **Weight**

The conditioned weight varies from 380 g/m<sup>2</sup>, 11 oz/sy to 500 g/m<sup>2</sup>, 17 oz/sy, tolerance  $\pm$  5%

### **Service lifetime**

→ approx. 4 years

**Abrasion resistance:** 20'000 – 30'000 rubs depending on the construction

**Pill-free:** Atlas random pilling test – 4-5 of maximum 5

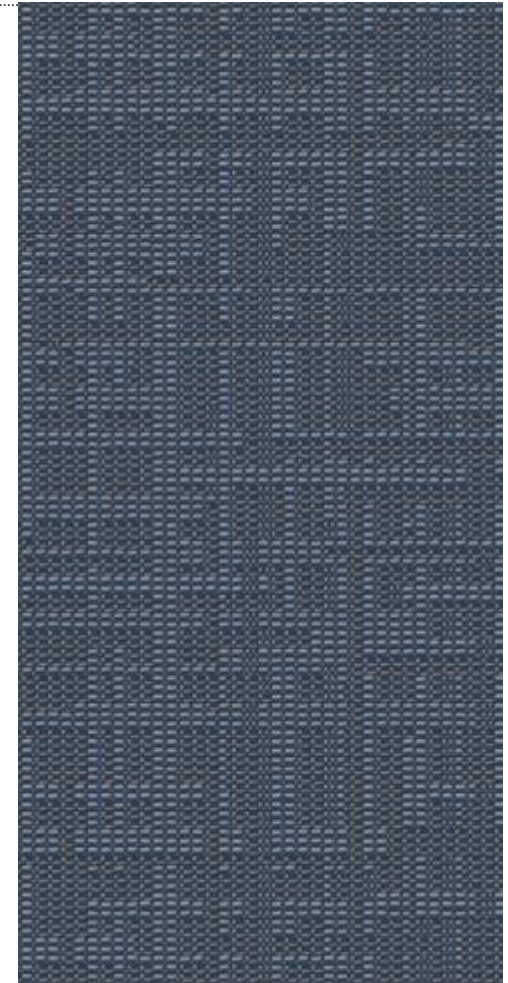
**Flammability:** Can be dry-cleaned at least 20 times before they cease to be flame retardant if cleaned according to Lantal cleaning recommendation.

### **Optional lamination**

For improved seating comfort and enhanced looks, Lantal can back the fabric with a seat lamination

### **Design**

Many design possibilities, no color limitations





# Lantal's wool blend seat cover fabrics

## Wool blend basic – Technical data



### Wool blend basic

#### Composition

90 – 95% Crespino wool

10 – 5% polyamide

The composition depends on  
the construction of the fabric

#### Weight

380 g/m<sup>2</sup> – 500 g/m<sup>2</sup>

(± 5%)

#### Design

Many design possibilities,  
no color limitations

#### Width

137 cm

#### MOQ

275 lm



# *Lantal's Climatex® LifeguardFR™ seat cover fabrics*



---

Lantal's Climatex® wool/viscose seat cover fabrics not only assure a high degree of seating comfort but are also produced in a very ecologically friendly and sustainable manner.

The materials – wool and viscose – consist of renewable resources, are fully biodegradable, and produced with environmentally friendly processes.



# *Lantal's Climatex® LifeguardFR™ seat cover fabrics*

## *Key advantages*



- Climatized seating: Excellent moisture transport and absorption optimized for long hauls
- Renewable resources
- Fully biodegradable
- Subtle shiny surface
- Guaranteed pill-free

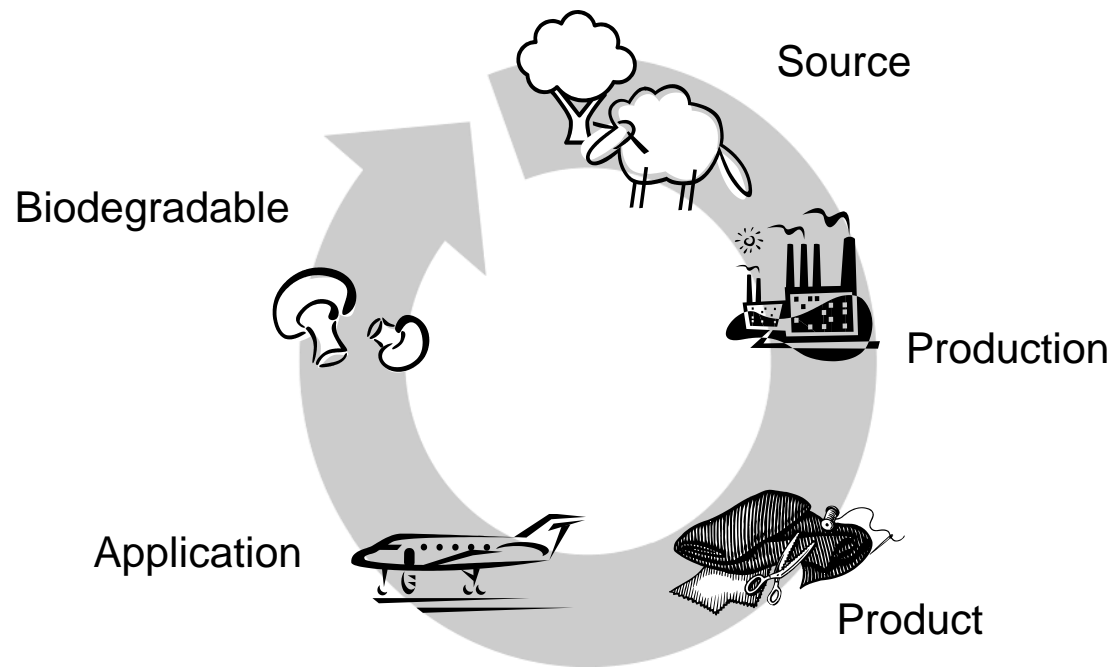


# *Lantal's Climatex® LifeguardFR™ seat cover fabrics*

## *Cradle to Cradle*

---

Climatex® LifeguardFR™ is manufactured according to the “Cradle to Cradle” principle





# *Lantal's Climatex® LifeguardFR™ seat cover fabrics*

## *Climatized seating*

---



### **Breathability**

Extremely permeable to air and water vapor, the fabric provides exceptional cooling during perspiration phases.

### **Moisture management**

Thanks to its outstanding moisture-wicking, buffering, and controlled evaporation characteristics, Climatex® LifeguardFR™ assures dry seat surfaces even after prolonged seat use.

### **Heat reflection**

The materials and dyes used reflect heat particularly well, even with dark colors.

### **Warmth transport**

Climatex® LifeguardFR™ transports contact and convection heat in a highly efficient manner. Changes in body temperature are continuously balanced.

---

# *Lantal's Climatex® LifeguardFR™ seat cover fabrics*

## *Key features*



### **Weight**

The conditioned weight varies from 320 g/m<sup>2</sup>, 9 oz/sy to 450 g/m<sup>2</sup>, 13 oz/sy, tolerance  $\pm$  5%

### **Service lifetime**

→ approx. 2.5 – 3 years

**Abrasion resistance:** 20'000 – 35'000 rubs depending on the construction

**Pill-free:** Atlas random pilling test – 5 of maximum 5

### **Optional lamination**

For improved seating comfort and enhanced looks, Lantal can back the fabric with a graphite foam

### **Design**

Many design possibilities, limited colors



# Lantal's Climatex® LifeguardFR™ seat cover fabrics

## Technical data



### Climatex® LifeguardFR™

#### Composition

50 – 60% wool

40 – 50 % viscose

The composition depends on the construction of the fabric

#### Weight

320 g/m<sup>2</sup> – 450 g/m<sup>2</sup>

(± 5%)

#### Design

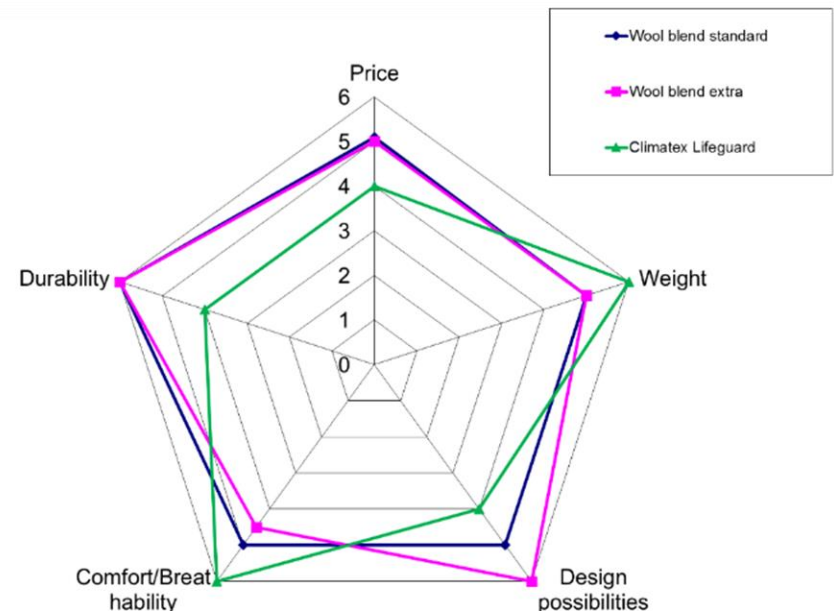
Many design possibilities,  
limited colors

#### Width

137 cm

#### MOQ

120 lm



# Lantal's seat cover fabrics

## Features overview



Criteria	Wool blend standard	Wool blend extra	Wool blend basic	Climatex® LifeguardFR™
Weight (g/m <sup>2</sup> ) (± 5%)	330 – 500 g/m <sup>2</sup>	350 – 700 g/m <sup>2</sup>	380 – 500 g/m <sup>2</sup>	320 – 405 g/m <sup>2</sup>
Width	137 cm	137 cm	137 cm	137 cm
Service lifetime (experience)	4 – 5 years	4 – 5 years	4	2.5 – 3 years
Abrasion	Very good	Very good	Good	Good
Design possibility	Various, no color limitations	Various, luster and glossy effect yarns	Various, no color limitations	Various, limited colors
Pilling	Guaranteed pill-free	Guaranteed pill-free	Pill-free	Pill-free
Flammability, smoke, tox properties	Passed	Passed	Passed	Passed
Optional finishings	Antistain Antibacterial	Antistain Antibacterial	Antistain Antibacterial	Antibacterial
MOQ	240 lm	240 lm	275 lm	120 lm
Cleaning	Dry cleaning	Dry cleaning	Dry cleaning	Dry cleaning
Application	All classes Short-, medium-, and long-haul	All classes Short-, medium-, and long-haul	All classes Short-, medium-, and long-haul	All classes Short-, medium-, and long-haul



# *Lantal's seat cover fabrics*

## *Additional finishings*

---



- Airlines may have problems either with stained seat covers or with odors in the cabin coming from seat covers.  
Lantal offers solutions to these problems in form of additional finishings.
  - The finishings can be applied to wool blend seat cover fabrics and polyester seat cover and curtain fabrics.
  - A combined finishing can be applied to wool blend seat cover fabrics. For polyester seat cover and curtain fabrics either a finishing with antistain effect or a finishing with hygienic effect can be applied.
  - The treatments are applied to the yardage only. The application is also possible on stock fabrics (MOQ 120 lfm).
-

## *Lantal's seat cover fabrics*

### *Additional finishings – Antistain effect*

---

- Liquids just roll off the the fabric without leaving any traces behind.
- The antistain treatment is a fluorocarbon finishing which is repellant to oils and fluids.
- The antistain effect works even after 10 dry cleaning cycles and fabrics stay permanently flame-resistant
- Cleaning cycles can be elongated if stained fabrics are cleaned on condition and spots are removed as early as possible.  
Old stains are difficult to clean on fabrics with the antistain treatment

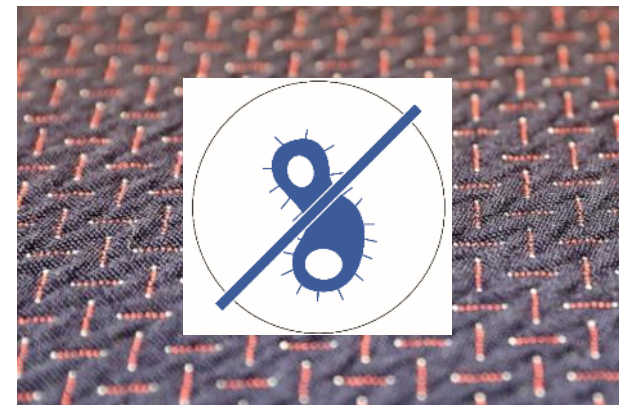


# *Lantal's seat cover fabrics*

## *Additional finishings – Hygienic effect*

---

- The hygienic treatment offers a permanent protection from a large number of bacteria and some yeasts.
- It inhibits the growth of bacteria and mildew and prevents the formation of odors  
→ keeps textiles fresh
- The finishing is safe for mankind and environment.



## *Lantal's leather seat covers*

---

The selection of leather grades available from Lantal covers the entire spectrum of customer expectations with respect to durability requirements, color preferences, and value-adding design options for compliance with corporate identity guidelines.





# *Lantal's leather seat covers*

## *Key advantages*

---

Leather is a natural material which is permeable to air and moisture; it is supple and soft, warm, flexible and durable.

Uniquely developed and individual in the pattern of its pores, scars, surface structure and natural creasing, every leather is a unique piece in its own right. These features are evidence of the genuineness of this natural material. With its fine, slightly tinted lacquer finish, genuine leather is flame-resistant, lightfast, oil-resistant and water-repellent. It complies with today's most stringent standards.

Easy to clean and care for, leather retains its original beauty for a very long time.

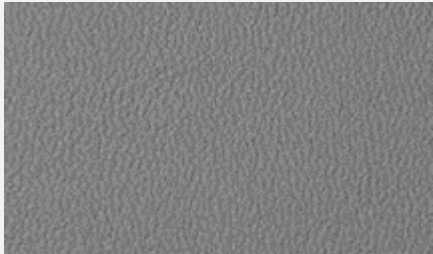


---



# Lantal's leather seat covers

## Technical data



	Classic	Crescendo	Conbrio
<b>Description</b>	Smooth surface, classic, elegant, gentle gloss	Medial embossing, authentic structure, soft feel	Strong intensive embossing, balanced structure, soft feel
<b>Thickness</b>	1.1 mm $\pm$ 0.1	1.1 mm $\pm$ 0.1	1.1 mm $\pm$ 0.1
<b>Weight (<math>\pm</math> 10%)</b>	800 g/m <sup>2</sup>	800 g/m <sup>2</sup>	800 g/m <sup>2</sup>
<b>Hide size approx.</b>	5 m <sup>2</sup>	5 m <sup>2</sup>	4.8 m <sup>2</sup>
<b>Raw material</b>	Europe, no coarse grain defects	Europe, isolated coarse grain defects	Europe, coarse grain defects, structured surface
			

# *Lantal's leather seat covers*

## *Features overview*

---

Criteria	Classic	Crescendo	Conbrio
Composition	100% leather	100% leather	100% leather
Thickness	1.1 mm $\pm$ 0.1	1.1 mm $\pm$ 0.1	1.1 mm $\pm$ 0.1
Weight ( $\pm$ 10%)	800 g/m <sup>2</sup>	800 g/m <sup>2</sup>	800 g/m <sup>2</sup>
Skin size	5.0 m <sup>2</sup>	5.0 m <sup>2</sup>	4.8 m <sup>2</sup>
Standard colors	48	48	48
MOQ	25 m <sup>2</sup> per color	50 m <sup>2</sup> per color	250 m <sup>2</sup> per color
Cleaning	Cleaning with soapy water	Cleaning with soapy water	Cleaning with soapy water
Recommended application	VIP; First, Business and Economy Class	VIP; First, Business and Economy Class	Business and Economy Class

## *Lantal's TEC-Leather seat covers*

---

Looking for an innovative material which has a **leather look, is lightweight, easy to clean, comfortable, has no cut loss and comes with a reasonable price**. Lantal developed TEC-Leather. In terms of properties and performance, this new innovative quality is far superior to other known leather and artificial leather products offered in the market.

TEC-Leather is an ingenious alternative to artificial leather, composition leather and even real leather and offers great benefits for the passenger's **health and well-being**.





# Lantal's TEC-Leather seat covers

## Key features

### Cleanability

- Unmatched ease of cleaning
- Stain repellent



TEC-Leather has an unique level of cleanability – but it is also stain repellent and therefore has a high resistance to stains.

### Well-being

- Soft touch
- No skin irritation
- Great thermal properties
- Vegan



TEC-Leather offers the best comfort for passengers.  
It is one of the best bio compatible products on the market.

### Cost savings

- Lightweight
- No fireblocker needed
- Certification by similarity



Thanks to it's low weight, easy make-up and the fact that no fireblocker is needed. TEC-Leather is a great possibility to save money.

### Appearance

- Seat-cover stays in shape for a long time – no sagging
- Easy make-up for various seat-shapes



Due to the high stretchability of TEC-Leather, it has no sagging and looks like new for a long time.

# *Lantal's TEC-Leather seat covers*

## *Technical Data*

### **TEC-Leather**

#### **Composition**

Polymer

#### **Weight**

650 g/m<sup>2</sup> (± 5%)

#### **Width**

146 cm

#### **Specifications**

FAR/CS 25.853, 12 sec. vertical

BMS 8-87, ABD0031

Seat burn test < 7.5%

(based on foam Metzeler FRM-C45)

#### **Colors**

Customized colors or stock colors

#### **Application**

Seat covers, antimacassars, headrest



The availability of all competencies from a single source allows us to implement your project quickly, efficiently, and to high quality standards. You benefit from the fact that Lantal's subsidiaries ACC and ASI are certified as a Design Organization (DO, EASA Part 21 J) and from Lantal's certification as a Production Organization (PO, EASA Part 21 G).



## *Parts & services*

### *Laminated seat covers for textiles*

Lantal can back the fabrics with an additional graphite foam or spacer fabric. Lantal's laminated seat covers have the following compelling advantages:

- Optimized seating comfort/climate
- Weight savings versus seat covers with conventional graphite foam
- Slightly longer product service life versus nonlaminated seat covers
- Laminated textile seat covers can be machine cleaned
- Improved looks due to low material material expansion and better shape retention





## *Parts & services*

### *Laminated seat covers for leather*

For improved seating comfort and enhanced looks, Lantal can also back the leather with a graphite foam or a comfort foam.

- Optimized seating comfort through excellent upholstery effect
- Weight savings of 20% versus seat covers with conventional graphite foam
- Slightly longer product service life versus non-laminated seat covers
- Improved looks due to low material expansion and better shape retention





## *Parts & services*

### *Ready-made seat covers, stitchings and antimacassars*

Lantal can provide added value by delivering cut and sewn seat covers.

For a unique look, many design options are possible:

- Various seams, decorative stitching
- Perforated or dimpled leather
- Embossing (leather); debossing (leather, artificial leather)
- Embroidery

Whether in fabrics or leathers, whether decorative, colored to contrast, or tone-on-tone, seams add visual appeal to every seat cover.

Lantal antimacassars are made of fabric, genuine leather or artificial leather as per Lantal's portfolio.



### **Embossing / Debossing / Embroidery**

---

Lantal leather grades can also be embossed, debossed or embroidered with logos or other custom design elements. Leather is highly adaptable to your livery and corporate identity.



### **Perforation**

---

The leather can also be perforated. Perforations can either extend through the entire thickness of the leather or be limited to dimpling (semi-perforation). Both options enhance the looks of the seat; perforations have the added benefit of a moisture balancing function.



## *Parts & services*

### *Ready-to-install products*

Lantal has the know-how and resources needed to manage the entire process from the kick-off to doorstep delivery, including the official EASA Form 1.

The status as Design Organization (EASA Part 21 J) allows Lantal's subsidiaries ASI and ACC to develop, test, and certify modifications to aircraft interior parts. As an approved Production Organization (PO, EASA Part 21 G), Lantal is authorized to manufacture parts according to approved design data and to ship them with an EASA Form 1.



## *Maintenance & cleaning*

### *In general for textiles and leather seat covers*

---

Thorough care and maintenance will prolong the attractive appearance of the seat covers. Provided that the correct cleaning procedures are respected, the seat covers will remain in good condition for an extended period of time. It is highly recommendable to set up a cleaning/maintenance plan and institutionalize the respective procedures.





# Maintenance & cleaning

## Wool blend and Climatex® LifeguardFR™ seat covers

Our experience-based recommendations include cleaning the carpet during the flight in the event of accidental soiling as well as routine cleaning on the ground.

- **Precaution**

All Velcro hook (male) tapes must be covered with their counterpart – loop tape – to avoid damage.

- **Pre-treatment**

We recommend spraying spots with a detergent activator and left for about 20 minutes before loading into the dry cleaning machine. Heavily stained areas should be slightly brushed with a soft brush.



## *Maintenance & cleaning*

### *Wool blend and Climatex® LifeguardFR™ seat covers*

---

- **Dry cleaning**

For the dry cleaning process, please follow the instructions of the machine supplier.

- **Re-treatment**

About 70 to 80 % of the covers should become clean during pre-treatment and dry cleaning – depending on the cleaning system and type of stains. The spots still visible can be cleaned with a steam gun followed by another dry-cleaning cycle. Before it is loaded into the dry cleaning machine, the fabric must be completely dry to avoid shrinkage.

Fabrics cleaned in accordance with our recommendations can be dry cleaned up to 20 times without losing the flame-resistant properties.



# *Maintenance & cleaning*

## *Leather seat covers*

Lantal genuine leather is treated with a light tinted coat of varnish to enhance the functionality of the leather, making it light fast, water- and oil-repellent and permeable to steam. Do not use any detergents!

- **Interim cleaning**

For interim cleaning, we recommend the use of a mild soap solution applied with a sponge or a soft cloth. Then wipe off the soap water with fresh water and dry with a soft cloth.

- **Main cleaning**

This is a deep cleaning intervention using cleaning fluids for leather. Wet a sponge with the cleaner and clean the leather with circular movements. Don't rub! Dry up gently with a clean cloth and let dry for at least 30 minutes.





### *03. Lantal's wall covering fabrics*





# Lantal's wall covering fabrics

## Overview



### Aramid blend

### Aramid

### Light transmission fabric

#### Composition

75% Aramid / 20% WO / 5% PA

100% Aramid

100% polymer

#### Weight ( $\pm 5\%$ )

680g/m<sup>2</sup>

275 g/m<sup>2</sup> – 380 g/m<sup>2</sup>

250 g/m<sup>2</sup>

#### Width

137 cm

137 cm

160 cm

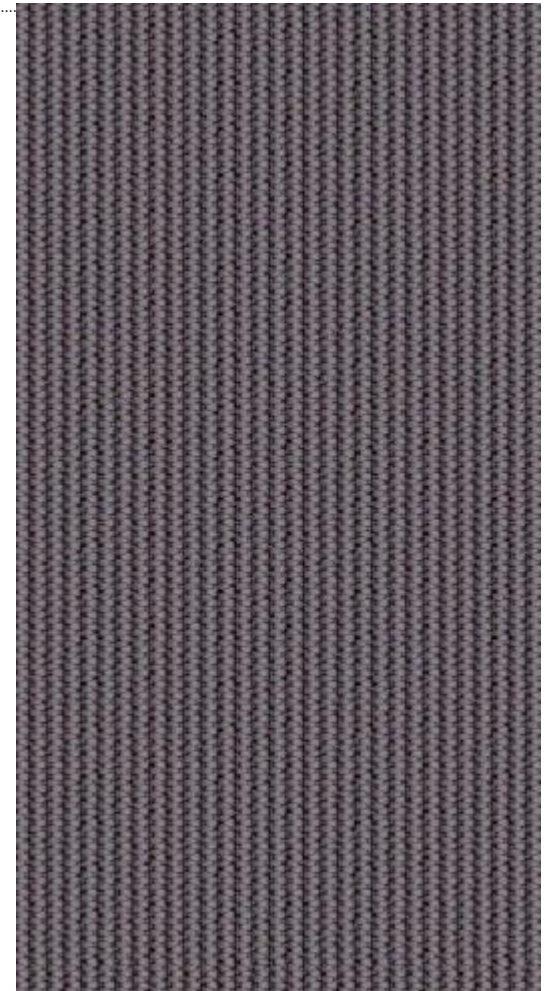


# *Lantal's aramid blend wall covering fabrics*

## *Key advantages*



- Hardwearing
- Surface coverings enhance noise reduction and sound absorption between seat configurations
- Compliance with all airworthiness requirements including heat release rate
- Meet OSU test (heat release rate) in combination with suitable panels



# *Lantal's aramid blend wall covering fabrics*

## *Technical data*



### **Aramid blend**

#### **Composition**

75% Aramid / 20% WO / 5% PA

#### **Weight**

680 g/m<sup>2</sup> (± 5%)

#### **Design**

Pre-coordinated designs available on stock or customized designs and colors. Limited light fastness rate due to special aramid dyes and dyeing processes.

#### **Width**

137 cm

#### **Specification**

FAR/CS 25.853

ABD 0031

Heat release rate (OSU)

# *Lantal's aramid wall covering fabrics*

## *Key advantages*



- Lightweight flat weave
- Very high strength for extended longevity
- Surface coverings enhance noise reduction and sound absorption between seat configurations
- Compliance with all airworthiness requirements
- Meet OSU test (heat release rate) in combination with suitable panels





# *Lantal's aramid wall covering fabrics*

## *Technical data*



---

### **Aramid**

---

**Composition**

100% Aramid

**Weight**

275 g/m<sup>2</sup> – 380 g/m<sup>2</sup>

(± 5%)

**Design**

Customized designs and colors for signature interiors.  
Limited light fastness rate due to special aramid dyes  
and dyeing processes.

**Width**

137 cm

**Specification**

FAR/CS 25.853

ABD 0031

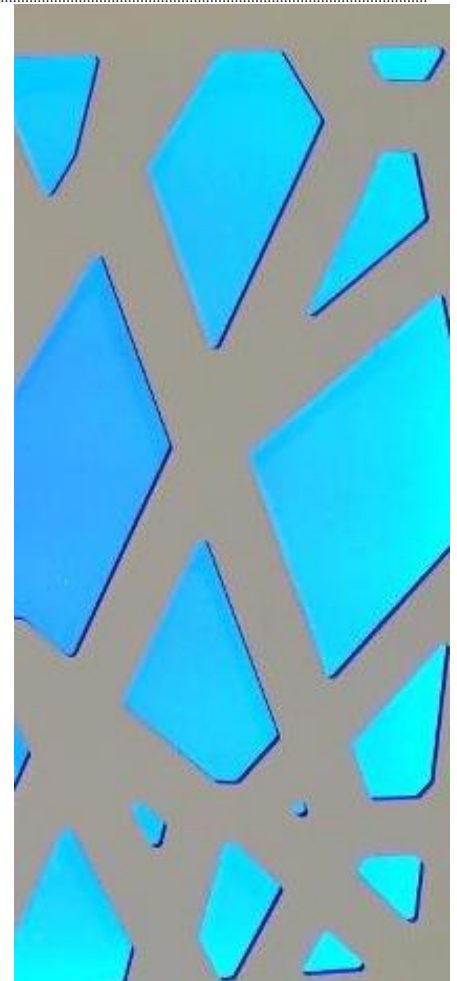
Heat release rate (OSU)

# *Lantal's light transmitting fabric*

## *Key advantage*

Lantal's light transmitting fabric has the following advantages:

- Fulfills the heat release test requirement (OSU) and can therefore be used as wall covering, class divider and in galleys.
- Printable with individual colors and designs
- 80% light transmission, can be back-lit to further enhance the cabin appearance
- Lightweight
- Dirt- and water-repellent, no absorption of moisture



# *Lantal's light transmitting fabric*

## *Technical data*

### **Light transmitting fabric**

**Composition**

100% polymer

**Weight**

250 g/m<sup>2</sup>

(± 5%)

**Design**

Plain, printed monochrome or  
printed with individual design

**Width fabric**

160 cm

**Print width**

150 cm

**Specification**

FAR/CS 25.853

ABD 0031

Heat release rate (OSU)

## 04. *Lantal's all-in-one solutions*



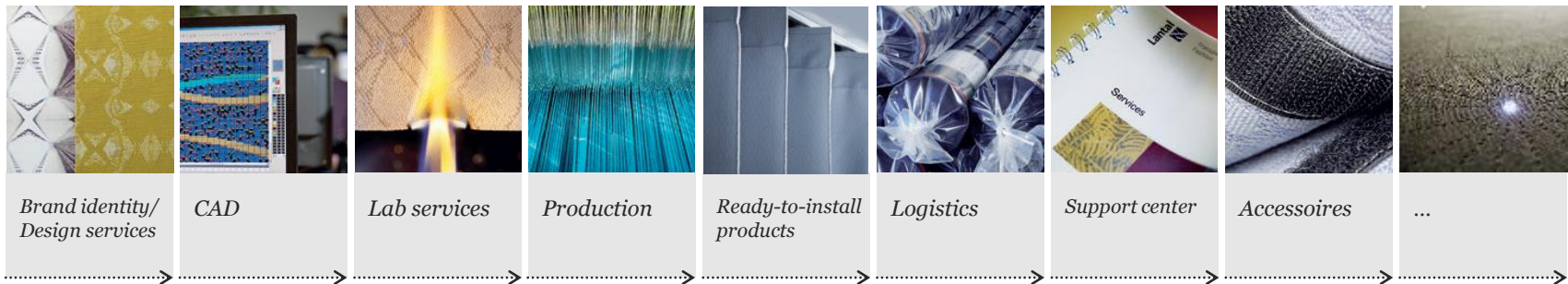


# *Lantal's all-in-one solutions*

## *Performance radar*



Lantal has been serving airlines and airframe makers all over the world since 1954. More and more transportation system operators are discovering the advantages of Lantal's all-in-one approach:



# Lantal's all-in-one solutions

## Ready-to-install parts



### Seat

#### Seat and headrest covers



*Fabric and leather, cut to size, sewn. Also for seats with Pneumatic Comfort System*

#### Antimacassars



*Fabric and leather, cut to size, sewn*

#### Arm caps



*Cut to size*

#### Literature pockets

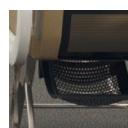


*Custom-designed to fit the seat*

#### Leg-/ footrests



*Leather, cut to size*



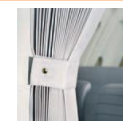
*Nets, custom-designed to fit the seat*



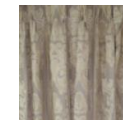
### Cabin Divider

#### Curtains

*Pleated, sewn, or steam-set, including tie-back*



*Plain, sewn, including tie-back*



### Floor

#### Carpets

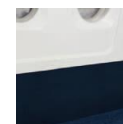
*Cut to width, rectangular tiles, cut to size, shapes pre-cut to size*



### Floor to Ceiling





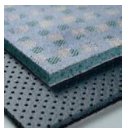






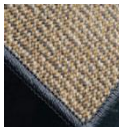
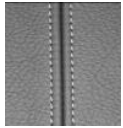



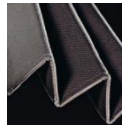
#### Lower sidewalls

*Cut to size*



# Lantal's all-in-one solutions

## Ready-to-install parts & options

Parts	Seat and headrest covers	Antimacassars	Curtains	Carpets
	 <p>Fabric and leather, cut to size, sewn. Also for seats with Pneumatic Comfort System</p>	 <p>Fabric and leather, cut to size, sewn</p>	 <p>Pleated, sewn, or steam-set, including tie-back Or: Plain, sewn, including tie-back</p>	 <p>Cut to width, rectangular tiles, cut to size, shapes pre-cut to size</p>
Options	 <p>Lamination, fabric and leather</p>	 <p>Embroidery, fabric and leather</p>	 <p>Laser-perforated or semi-transparent</p>	 <p>Tone-on-tone serging</p>
	 <p>Perforation, leather</p>	 <p>Embossing, leather</p>	 <p>Double-sided printed</p>	 <p>Contrast serging</p>
	 <p>Contrasting seams and decorative stitching, fabric and leather</p>		 <p>Light-blocking</p>	 <p>Self-adhesive coatings</p>
	 <p>Stain repellent, antimicrobial finish, fabric</p>		 <p>Sound-absorbing</p>	

# *Lantal's all-in-one solutions*

## *Advantages of ready-to-install parts*

---

- Lantal manages the entire process from development, engineering, and certification to on-time delivery. You benefit from a single point of contact, streamlined administration, lower costs, and less complexity from start to finish.
- Easy to install, delivered ready-to-install
- The physical delivery is accompanied by an EASA Form 1 or CoC
- Compliance with all airworthiness requirements

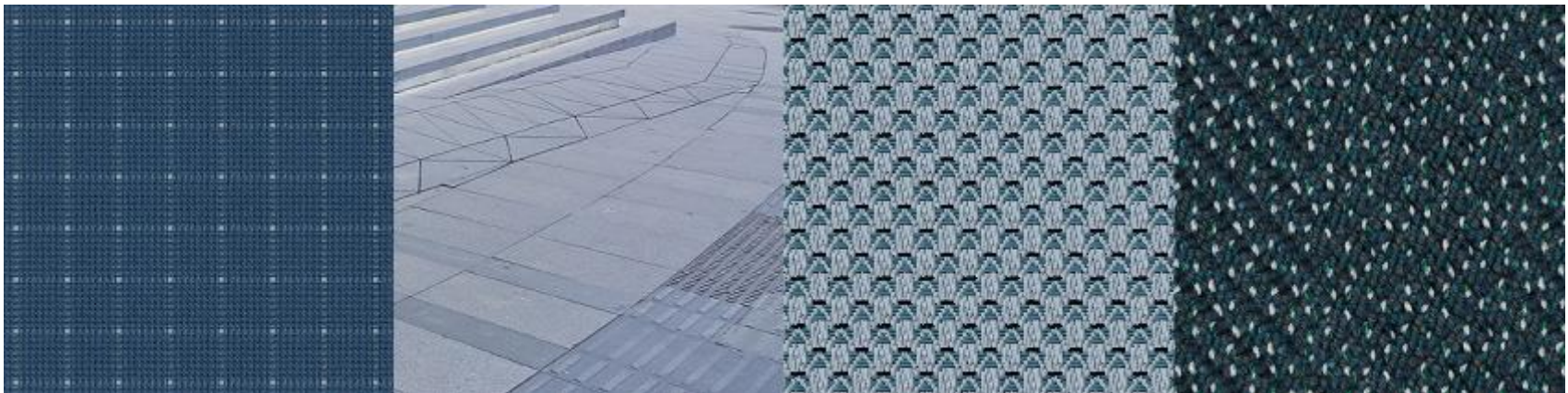




# *Lantal's all-in-one solutions*

## *Design services*

- Interior designs matched to the identity of the airline's service brand
- Consulting in brand and corporate design issues
- Specialized in planning and design of coordinated interiors for aircraft, with sound suggestions for materials
- Tailor-made or total concepts as well as system solutions
- Visualization in presentation boards, material samples, mood boards and 3-D
- Customer oriented solutions, designed for optimal service life and minimized total cost of ownership



# *Lantal's all-in-one solutions*

## *Lab services*

- Flammability test
- Smoke/toxicity test
- Flammability test for seat cushions
- Heat release rate → In accordance with FAR/CS 25.853
- And many more – for example: Abrasion resistance, peel test, electrostatic propensity, pilling, colorfastness, perspiration, dry cleaning, rubbing, etc.



# *Lantal's all-in-one solutions*

## *Advantages of Lantal lab*



- In connection with Production Organization Approval (POA), the Lantal lab was audited to EASA regulations Part 21 Subpart G by FOCA
- Every product manufactured by Lantal is tested and delivered with an approval certificate
- Lab services for third parties





# *Lantal – The ultimate in well-being for passengers*



Do something for the uniqueness and the identity of your service brand and its income potential.  
Talk to Lantal!

